

# PCB PIEZOTRONICS CALIBRATION SERVICES

PRECISION & CARE IN EVERY MEASUREMENT

## ISO 17025 ACCREDITED CALIBRATION

At PCB Piezotronics, our expertise extends beyond just a few sensor types. We specialize in calibrating a broad array of critical equipment, including shock, vibration, pressure, and force sensors, signal conditioners, and more.

## GLOBAL EXPERTISE AT YOUR FINGERTIPS

Our global network keeps your equipment performing at its best, wherever your work takes you.

## QUICK TURNAROUND, UNCOMPROMISED QUALITY

Our expedited service option ensures your sensors are calibrated and returned within two weeks, maintaining the highest quality standards.

## EXCEPTIONAL CARE, NO EXTRA COST

Every calibration includes free maintenance services to ensure peak performance.

- Sensors expertly cleaned, polished, and scratches removed where possible
- Free replacements for missing studs and Petro Wax
- Damaged storage boxes replaced



# ACCURACY. EXCELLENCE. TOTAL CUSTOMER SATISFACTION.

## PRODUCTS WE CALIBRATE

Our expertise covers a wide range of PCB-manufactured and third-party sensors and instrumentation, including:

- Accelerometers
- Dynamic Pressure Sensors
- Microphones & Sound Level Meters
- Handheld & Portable Calibrators
- Impact Hammers & Force Sensors
- Signal Conditioners & Electronics\*

\*Available exclusively for PCB® and Endevco® products.

## GLOBAL ACCREDITATIONS

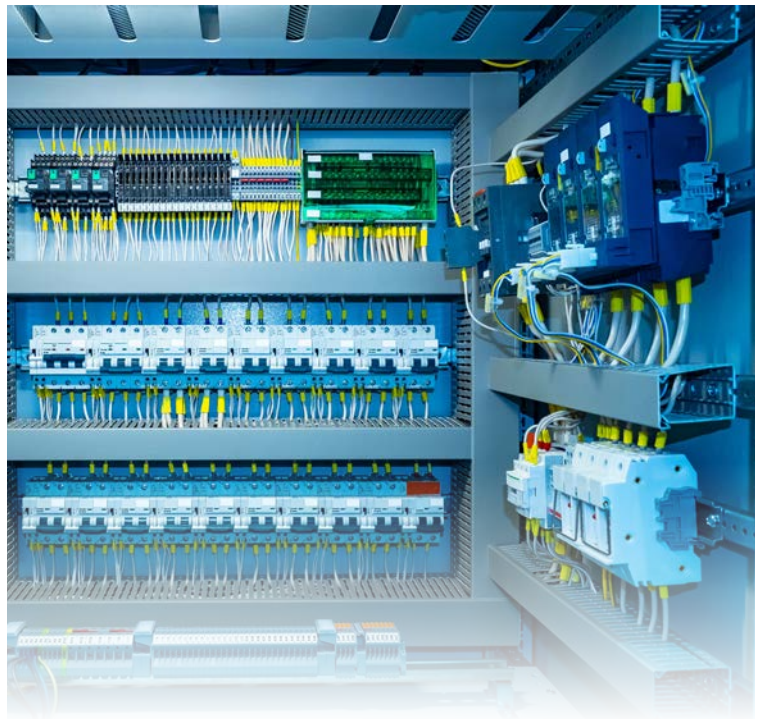
PCB calibration services are backed by globally recognized accreditations:

- A2LA Accredited to ISO/IEC 17025 (U.S.)
- DAkkS Accredited to ISO/IEC 17025 (Europe)

Our processes meet the highest international standards, providing you with accurate results guaranteed by the original manufacturer.

## 24/7 EXPERT SUPPORT

PCB's customer service is more than just technical—it's personal. From the moment you schedule your service, our 24/7 dedicated team is available to provide tailored advice and expert assistance. When precision matters, trust PCB for accurate, reliable calibration services and unmatched customer care.



3425 Walden Avenue, Depew, NY 14043 USA

pcb.com | info@pcb.com | 800 828 8840 | +1 716 684 0001

© 2023 PCB Piezotronics - all rights reserved. PCB Piezotronics is a wholly-owned subsidiary of Amphenol Corporation. Endevco is an assumed name of PCB Piezotronics of North Carolina, Inc., which is a wholly-owned subsidiary of PCB Piezotronics, Inc. Accumetrics, Inc. and The Modal Shop, Inc. are wholly-owned subsidiaries of PCB Piezotronics, Inc. IMI Sensors and Larson Davis are Divisions of PCB Piezotronics, Inc. Except for any third party marks for which attribution is provided herein, the company names and product names used in this document may be the registered trademarks or unregistered trademarks of PCB Piezotronics, Inc., PCB Piezotronics of North Carolina, Inc. (d/b/a Endevco), The Modal Shop, Inc. or Accumetrics, Inc. Detailed trademark ownership information is available at [www.pcb.com/trademarkownership](http://www.pcb.com/trademarkownership).

TM-CalibrationServices-1124