



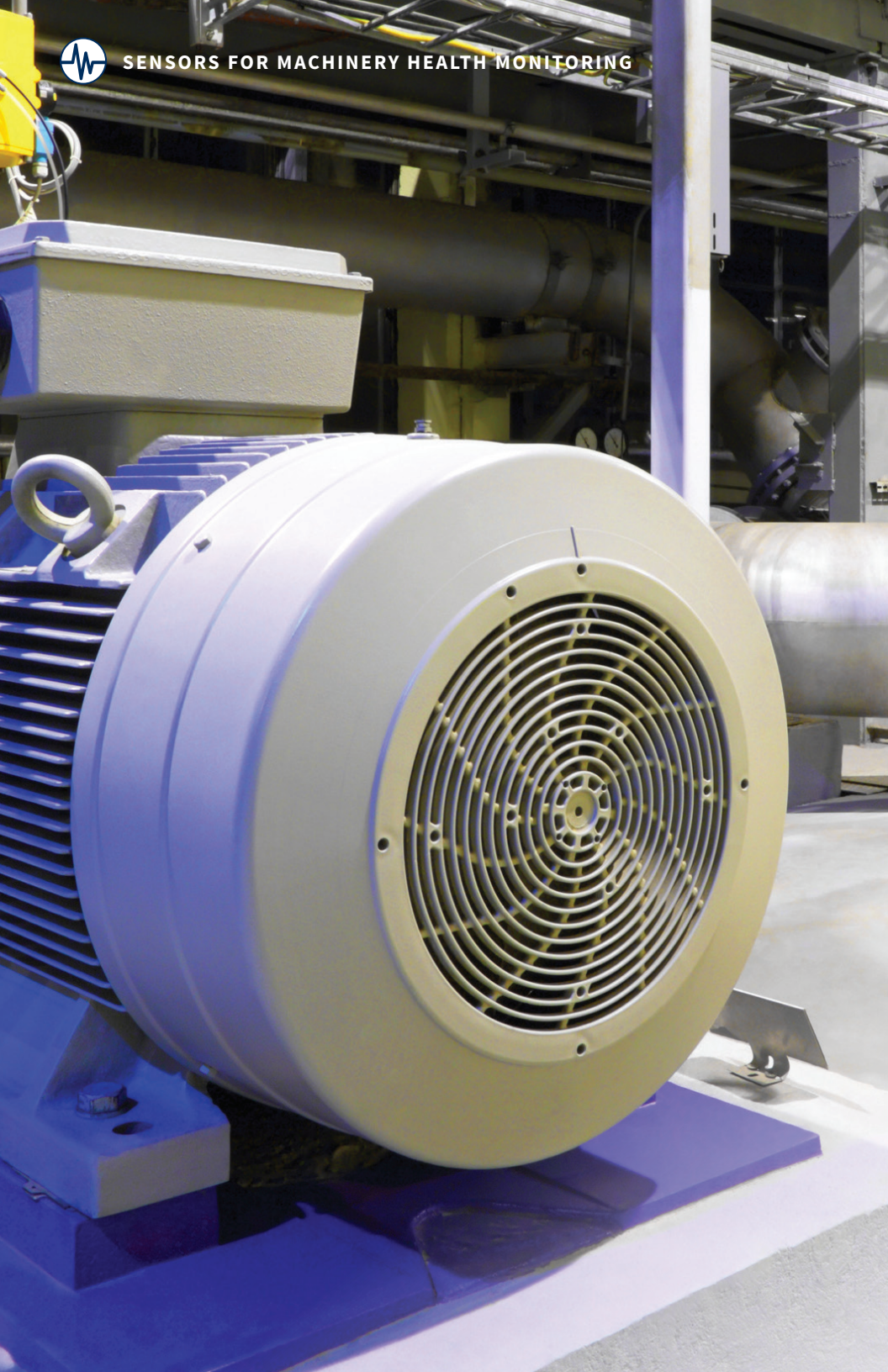
SENSOR KITS

Measurable savings on our most popular sensors and accessories





SENSORS FOR MACHINERY HEALTH MONITORING





Save time and money with our predefined kits of the most commonly used industrial ICP® accelerometers and accessories. Let us take the guess work out of it!

With these kits, monitor essential equipment and have inventory on hand when needed. Ideal for condition based monitoring, high temperature monitoring, and wet environments or submerged applications.



TOP-EXIT, BASIC CONDITION MONITORING SENSOR KIT

Model 603C01 features a compact housing and small footprint.

PRODUCTS INCLUDED:

ICP® Accelerometer (Model 603C01)

Top exit ICP® accelerometer with ceramic element, 100 mV/g sensitivity, 0.5 to 10k Hz frequency range ($\pm 3\text{dB}$) and 2-pin connector. Operates in environments up to 250 °F.

Cable (Model 508BRXXXBZ)

Polyurethane-jacketed cables in options of 10ft/20ft/30ft/50ft length with a 2-socket MIL-C-5015 connector on one end and a blunt cut termination on the other end.

Mounting Pad (Model 080A118)

1 in diameter stainless steel mounting pads with a ¼-28 tapped hole.

Switch Box (Model 691C41/691010 or 691C42/691020)

Centralized data collection point in fiberglass enclosure with individual PGME07 cord grips.

Adhesive Kit (Model 075A05)

Epoxy adhesive kit is intended for mounting sensors.



Discounts up to 20% off listed price.

SENSOR KIT	COMPONENTS	CABLE LENGTH OPTIONS (XXX)
6-CHANNEL		
600B42/XXX	(6) Model 603C01 (6) Model 508BRXXXBZ (6) Model 080A118 (1) Model 691C41/691010 (1) Model 075A05	10 ft
		20 ft
		30 ft
		50 ft
12-CHANNEL		
600B43/XXX	(12) Model 603C01 (12) Model 508BRXXXBZ (12) Model 080A118 (1) Model 691C42/691020 (1) Model 075A05	10 ft
		20 ft
		30 ft
		50 ft



SIDE-EXIT, BASIC CONDITION MONITORING SENSOR KIT

Model 602D01 features a low-profile, through-bolt design.

PRODUCTS INCLUDED:

ICP® Accelerometer (Model 602D01)

Side exit ICP® accelerometer with ceramic element, 100 mV/g sensitivity, 0.5 to 8k Hz frequency range ($\pm 3\text{dB}$) and 2-pin connector. Operates in environments up to 250 °F.

Cable (Model 508BRXXXBZ)

Polyurethane-jacketed cables in options of 10ft/20ft/30ft/50ft length with a 2-socket MIL-C-5015 connector on one end and a blunt cut termination on the other end.

Mounting Pad (Model 080A118)

1 in diameter stainless steel mounting pads with a ¼-28 tapped hole.

Switch Box (Model 691C41/691010 or 691C42/691020)

Centralized data collection point in fiberglass enclosure with individual PGME07 cord grips.

Adhesive Kit (Model 075A05)

Epoxy adhesive kit is intended for mounting sensors.



Discounts up to 20% off listed price.

SENSOR KIT	COMPONENTS	CABLE LENGTH OPTIONS (XXX)
6-CHANNEL		
600B40/XXX	(6) Model 602D01	10 ft
	(6) Model 508BRXXXBZ	20 ft
	(6) Model 080A118	30 ft
	(1) Model 691C41/691010 (1) Model 075A05	50ft
12-CHANNEL		
600B41/XXX	(12) Model 602D01	10 ft
	(12) Model 508BRXXXBZ	20 ft
	(12) Model 080A118	30 ft
	(1) Model 691C42/691020 (1) Model 075A05	50 ft



SWIVELER[®] SENSOR KIT

Model 607A11 makes installation in tight spots quick and easy. The unique patented design features a floating lock nut that allows for easy cable orientation before securing the sensor into place.

PRODUCTS INCLUDED:

ICP[®] Accelerometer (Model 607A11)

Side exit ICP[®] accelerometer with ceramic element, 100 mV/g sensitivity, 0.5 to 10k Hz frequency range, patented swivel base, (± 3 dB) and integral cable. Operates in environments up to 250 °F.

Mounting Pad (Model 080A118)

1 in diameter stainless steel mounting pads with a ¼-28 tapped hole.

Switch Box (Model 691C41/691010 or 691C42/691020)

Centralized data collection point in fiberglass enclosure with individual PGME07 cord grips.

Adhesive Kit (Model 075A05)

Epoxy adhesive kit is intended for mounting sensors.



Discounts up to 20% off listed price.

SENSOR KIT	COMPONENTS	CABLE LENGTH OPTIONS (XXX)
6-CHANNEL		
600B46/XXX	(6) Model 607A11 (6) Model 080A118 (1) Model 691C41/691010 (1) Model 075A05	10 ft
		20 ft
		30 ft
		50 ft
12-CHANNEL		
600B47/XXX	(12) Model 607A11 (12) Model 080A118 (1) Model 691C42/691020 (1) Model 075A05	10 ft
		20 ft
		30 ft
		50 ft



HIGH SENSITIVITY SENSOR KIT

Model 601A02 is a high sensitivity accelerometer with internal electronics that is ideal for measuring low amplitude vibration.

PRODUCTS INCLUDED:

ICP® Accelerometer (Model 601A02)

Top exit ICP® accelerometer with ceramic element, 500 mV/g sensitivity, 0.17 to 10k Hz frequency range ($\pm 3\text{dB}$) and 2-pin connector. Operates in environments up to 250 °F.

Cable (Model 508BRXXXBZ)

Polyurethane-jacketed cables in options of 10ft/20ft/30ft/50ft length with a 2-socket MIL-C-5015 connector on one end and a blunt cut termination on the other end.

Mounting Pad (Model 080A118)

1 in diameter stainless steel mounting pads with a $\frac{1}{4}$ -28 tapped hole.

Switch Box (Model 691C41/691010 or 691C42/691020)

Centralized data collection point in fiberglass enclosure with individual PGME07 cord grips.

Adhesive Kit (Model 075A05)

Epoxy adhesive kit is intended for mounting sensors.



Discounts up to 20% off listed price.

SENSOR KIT	COMPONENTS	CABLE LENGTH OPTIONS (XXX)
6-CHANNEL		
600B52/XXX	(6) Model 601A02	10 ft
	(6) Model 508BRXXBZ	20 ft
	(6) Model 080A118	30 ft
	(1) Model 691C41/691010 (1) Model 075A05	50 ft
12-CHANNEL		
600B53/XXX	(12) Model 601A02	10 ft
	(12) Model 508BRXXBZ	20 ft
	(12) Model 080A118	30 ft
	(1) Model 691C42/691020 (1) Model 075A05	50 ft



3425 Walden Avenue
Depew, NY 14043-2495 USA

| VISIT US AT WWW.PCB.COM/IMI-SENSORS |

IMI SENSORS designs and manufactures a full line of accelerometers, sensors, vibration switches, vibration transmitters, cables and accessories for predictive maintenance, continuous vibration monitoring, and machinery equipment protection. Products include rugged industrial ICP® accelerometers, 4-20 mA industrial vibration sensors and transmitters for 24/7 monitoring, electronic and mechanical vibration switches, the patented Bearing Fault Detector, high temperature accelerometers to +1300 °F (+704 °C), 2-wire Smart Vibration Switch, and the patented Reciprocating Machinery Protector. CE approved and intrinsically safe versions are available for most products.

THE INDUSTRY'S ONLY COMMITMENT TO TOTAL CUSTOMER SATISFACTION.

© 2017 PCB Piezotronics, Inc. In the interest of constant product improvement, specifications are subject to change without notice. PCB®, Swiveler®, Modally Tuned®, and IMI® with associated logo are registered trademarks of PCB Piezotronics, Inc. in the United States. ICP® is a registered trademark of PCB Piezotronics Europe GmbH in Germany and other countries. SensorLineSM is a servicemark of PCB Piezotronics, Inc. PCB Piezotronics, Inc. was acquired by MTS Systems Corporation in 2016 and merged with its sensors division – MTS Sensors. *Loctite is a registered trademark of Henkel Corporation, its subsidiaries, or its affiliated companies.

IMI-BUNDLE-1018