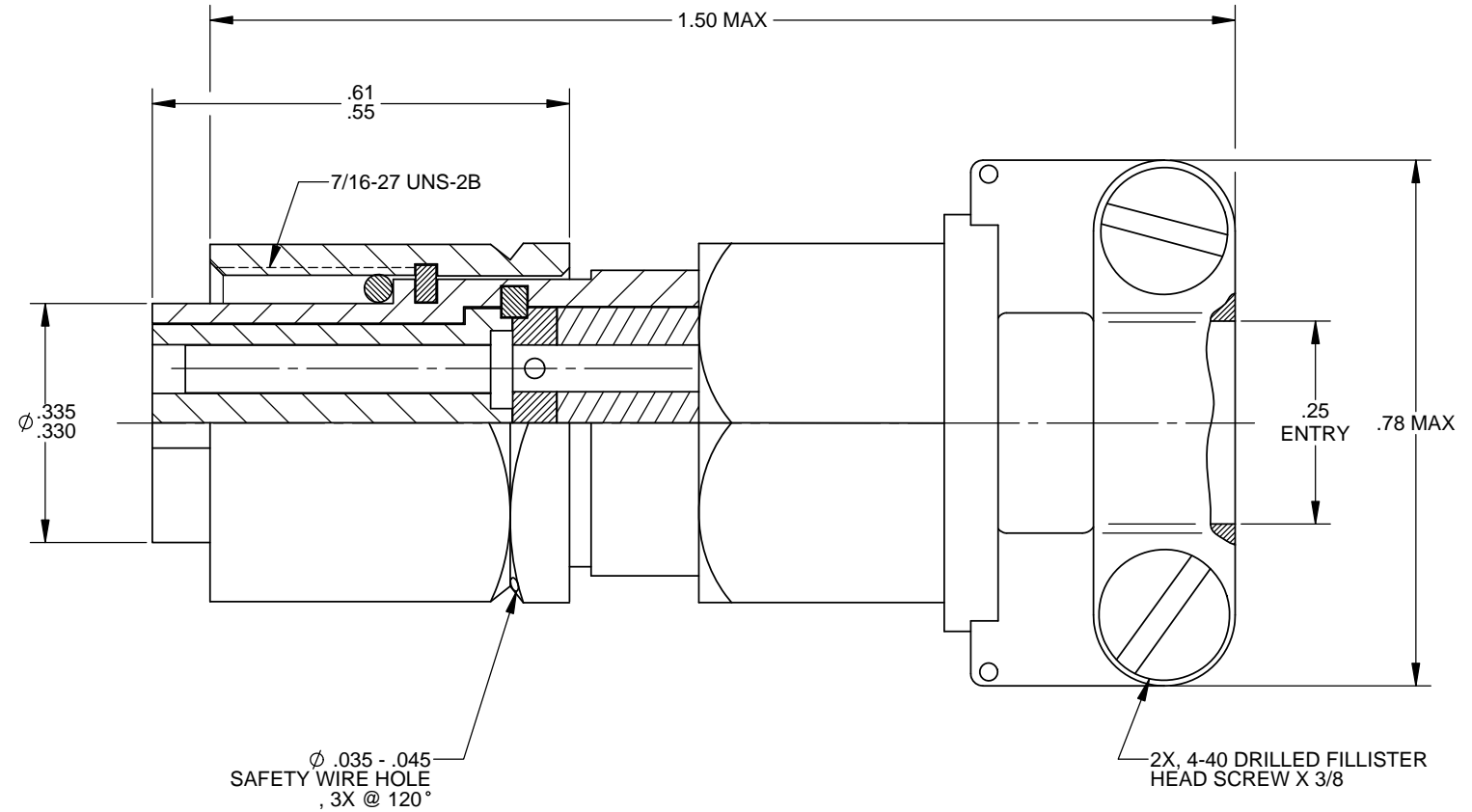
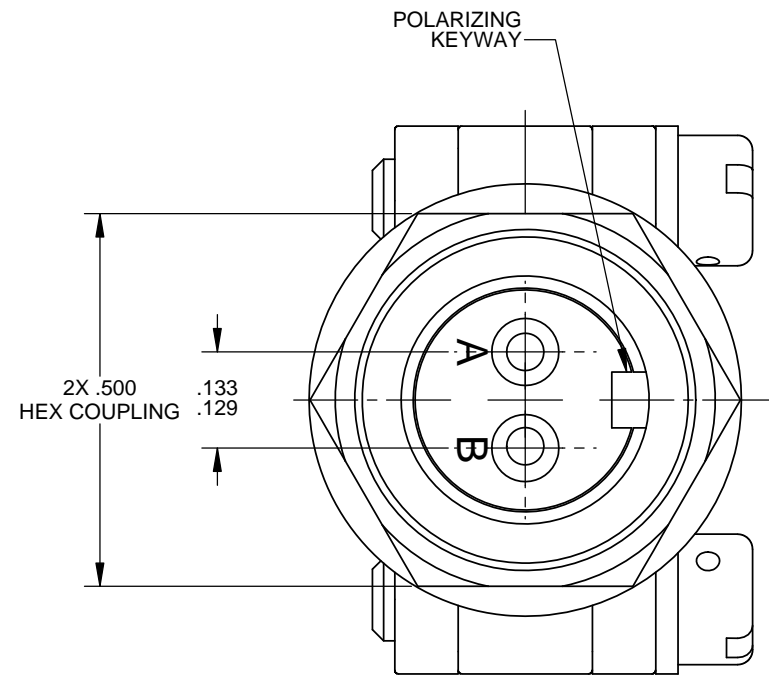


THIS DRAWING AND/OR ITS DESIGN IS PROPRIETARY AND THE PROPERTY OF MEGGITT (ORANGE COUNTY), INC. IT SHALL NOT BE REPRODUCED, COPIED, LENT OR OTHERWISE DISPOSED OF, DIRECTLY OR INDIRECTLY, NOR BE USED TO FURNISH ANY INFORMATION FOR MAKING OF DRAWINGS, PRINTS OR APPARATUS, OR PARTS THEREFORE. DOCUMENT SUBJECT TO U.S. EXPORT CONTROLS. COMPLIANCE APPROVAL REQUIRED PRIOR TO DISTRIBUTION.

REVISIONS				
REV	DESCRIPTION	BY/DATE	CHK	APPR
B1	REVISED AND REDRAWN PER ECN27243.	TD 03-17-16	TAK	DM
B2	REVISED PER ECN27474.	TD 04-27-16	PM	MM



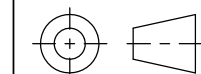
DWG NO
 ID26574
 SM
 1
 REV
 B2

2 CRIMP CONTACT SOCKETS TO WIRE WITH BUCHANAN CRIMP TOOL M22520-1-01 USING CRIMP DIE N22520/1-02.

1 PLUG ASSEMBLY MUST MATE WITH MEGGITT PART NO. 16352, RECEPTACLE ASSEMBLY.

NOTES: UNLESS OTHERWISE SPECIFIED

UNLESS OTHERWISE SPECIFIED:
 INTERPRET DIM & TOL PER ASME Y14.5M - 2009.
 DO NOT SCALE DRAWING.
 REMOVE BURRS.
 COUNTERSINK INTERNAL THDS 90° TO MAJOR DIA.
 CHAM EXT THDS 45° TO MINOR DIA.
 THD LENGTHS AND DEPTHS ARE FOR MIN FULL THDS.
 THDS PER MIL-S-7742.
 DIMENSIONS APPLY AFTER FINISHING.
 63% ALL MACHINED SURFACES.
 TOTAL RUNOUT WITHIN .005.
 BREAK SHARP EDGES .005 TO .010.
 MACHINED FILLET RADII .005 TO .015.
 WELDING SYMBOLS PER AWS A2.4.
 ABBREVIATIONS PER ASME Y14.38M.



UNLESS OTHERWISE SPECIFIED:
 DIMENSIONS ARE IN INCHES.
 TOLERANCES ON:
 FRAC- DECIMALS ANGLES
 TIONS .X .XX .XXX
 ± --- ± - ± .02 ± .015 ± 2°

---	6917M42-2
	6917M39
	6917B
NEXT ASSY	USED ON
APPLICATIONS	

MATERIAL -----
 FINISH -----

CONTRACT NUMBER
CONTRACTOR
DRAWN BY/DATE T. BARNES 01/04/89
CHECKER/DATE G. SWENSON 01/13/89
APPROVAL/DATE R. JOHNSON 01/17/89
APPROVAL/DATE

PARTS LIST

Meggitt (Orange County), Inc.
 14600 Myford Road, Irvine, CA 92606, USA

PLUG ASSEMBLY, 500 °F

SIZE	FSCM	DWG NO	REV
C	95411	ID26574	B2
SCALE:	NONE	SOL	SHEET 1 OF 1

A