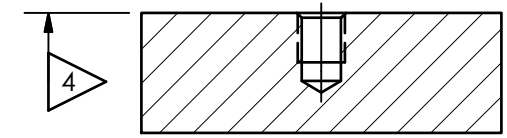
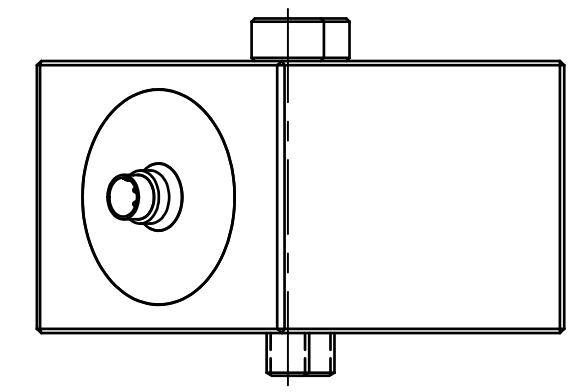
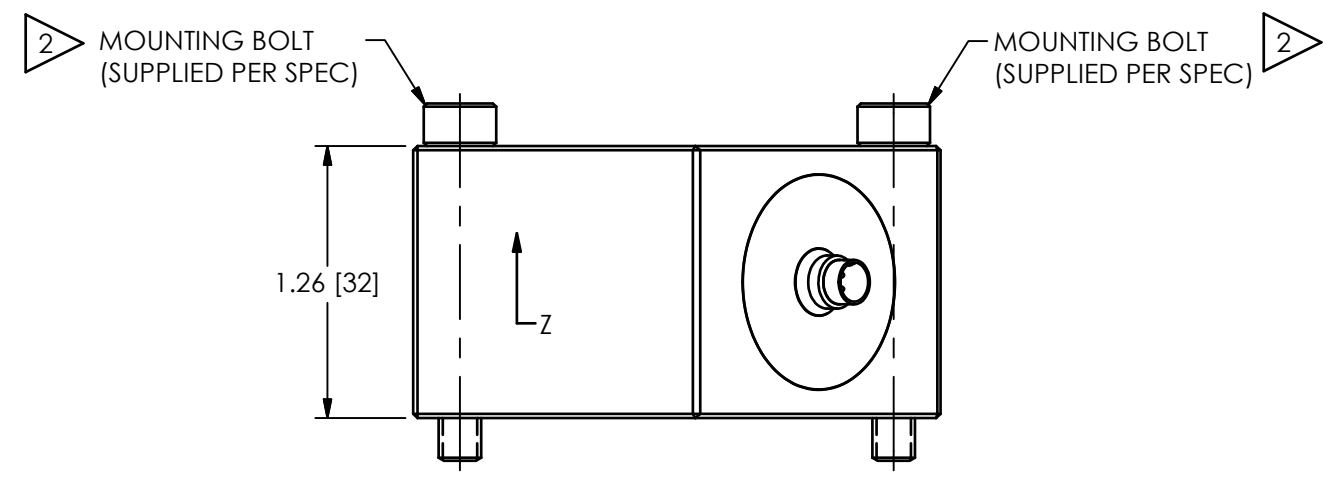
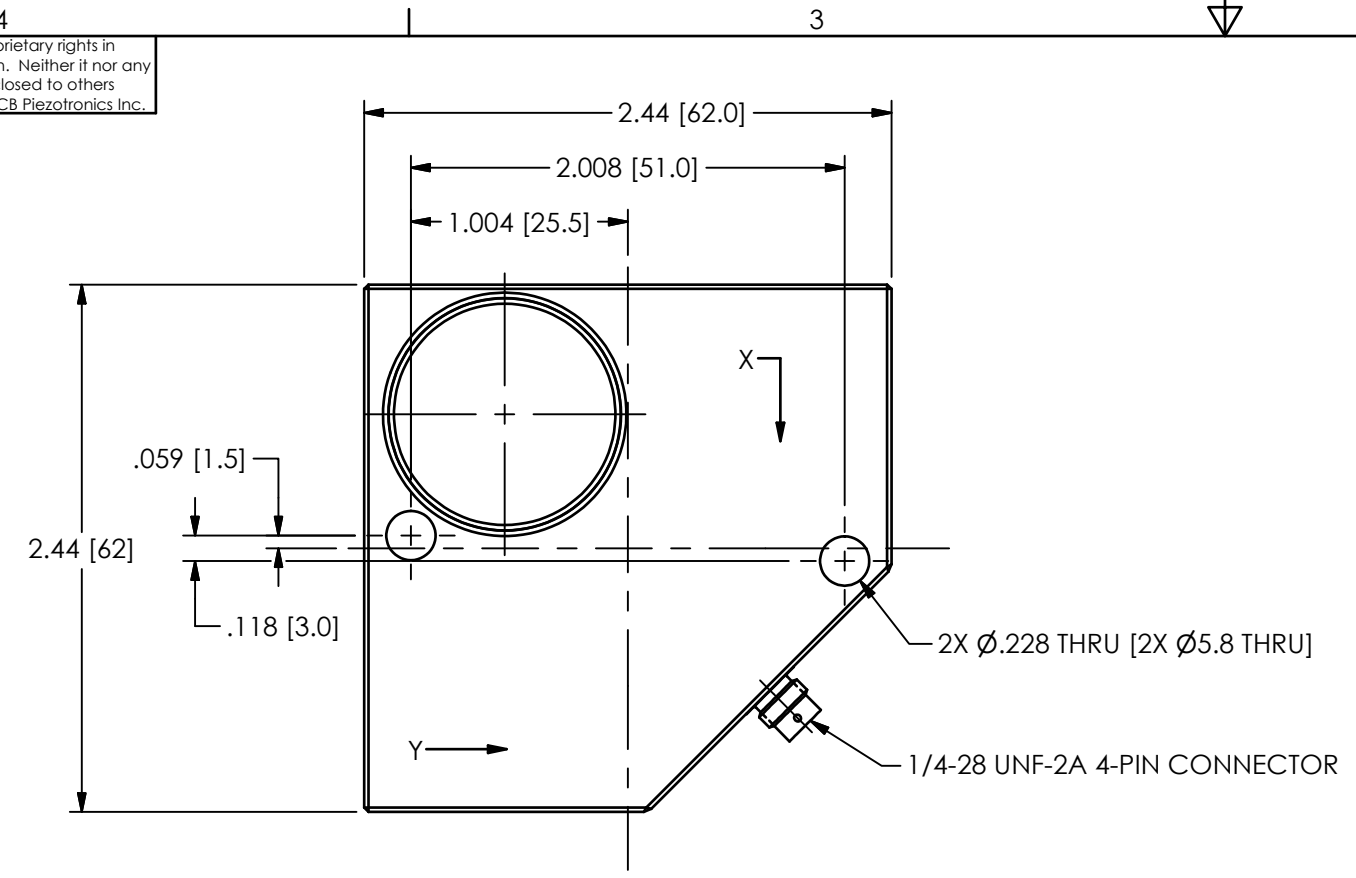


PCB Piezotronics Inc. claims proprietary rights in the information disclosed hereon. Neither it nor any reproduction thereof will be disclosed to others without the written consent of PCB Piezotronics Inc.

72715

REVISIONS		
REV	DESCRIPTION	DIN
NR	RELEASED TO DRAFTING	50774



MOUNTING HOLE PREPARATION (2X):
M5x0.8-6g ∇ .205 [5.21] MIN

- 5.) FOR BEST RESULTS, PLACE A THIN LAYER OF SILICONE GREASE (OR EQUIVALENT) ON INTERFACE PRIOR TO MOUNTING
- 4 MOUNTING SURFACE SHOULD BE FLAT TO WITHIN .001 [.03] TIR ACROSS SENSOR FOOTPRINT WITH A FINISH OF 63 [1.61] OR BETTER FOR BEST RESULTS
- 3 DRILL PERPENDICULAR TO MOUNTING SURFACE TO WITHIN $\pm 1^\circ$
- 2 4 mm HEX: RECOMMENDED MOUNTING TORQUE OF 10-20 in-lb [1.13-2.26 Nm]
- 1.) MOUNTING BOLTS NOT SHOWN IN TOP VIEW FOR CLARITY

UNLESS OTHERWISE SPECIFIED TOLERANCES ARE:		DRAWN		CHECKED		ENGINEER	
DIMENSIONS IN INCHES	DIMENSIONS IN MILLIMETERS [IN BRACKETS]	JDM	5/12/20	JDM	5/12/20	DRK	5/12/20
DECIMALS XX \pm .01 XXX \pm .005	DECIMALS X \pm 0.3 XX \pm 0.13	TITLE INSTALLATION DRAWING CASE ISOLATED SEISMIC TRIAX					
ANGLES \pm 2 DEGREES	ANGLES \pm 2 DEGREES						
FILLETS AND RADII .003 - .005	FILLETS AND RADII 0.07 - 0.13	CODE IDENT. NO. 52681		DWG. NO. 72715		3425 WALDEN AVE. DEPEW, NY 14043 (716) 684-0001 E-MAIL: sales@pcb.com	
		SCALE: 1.125X		SHEET 1 OF 1			

