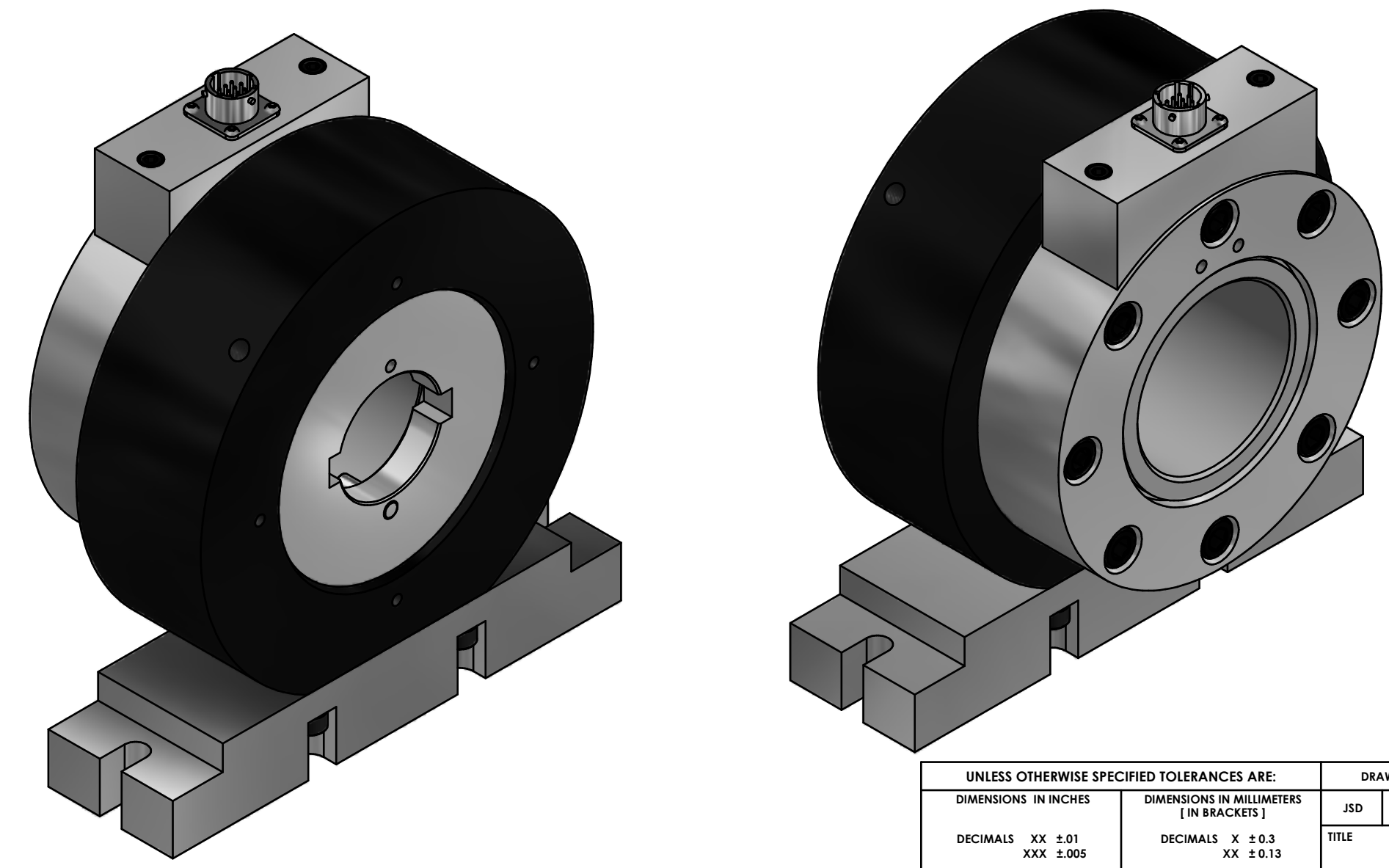
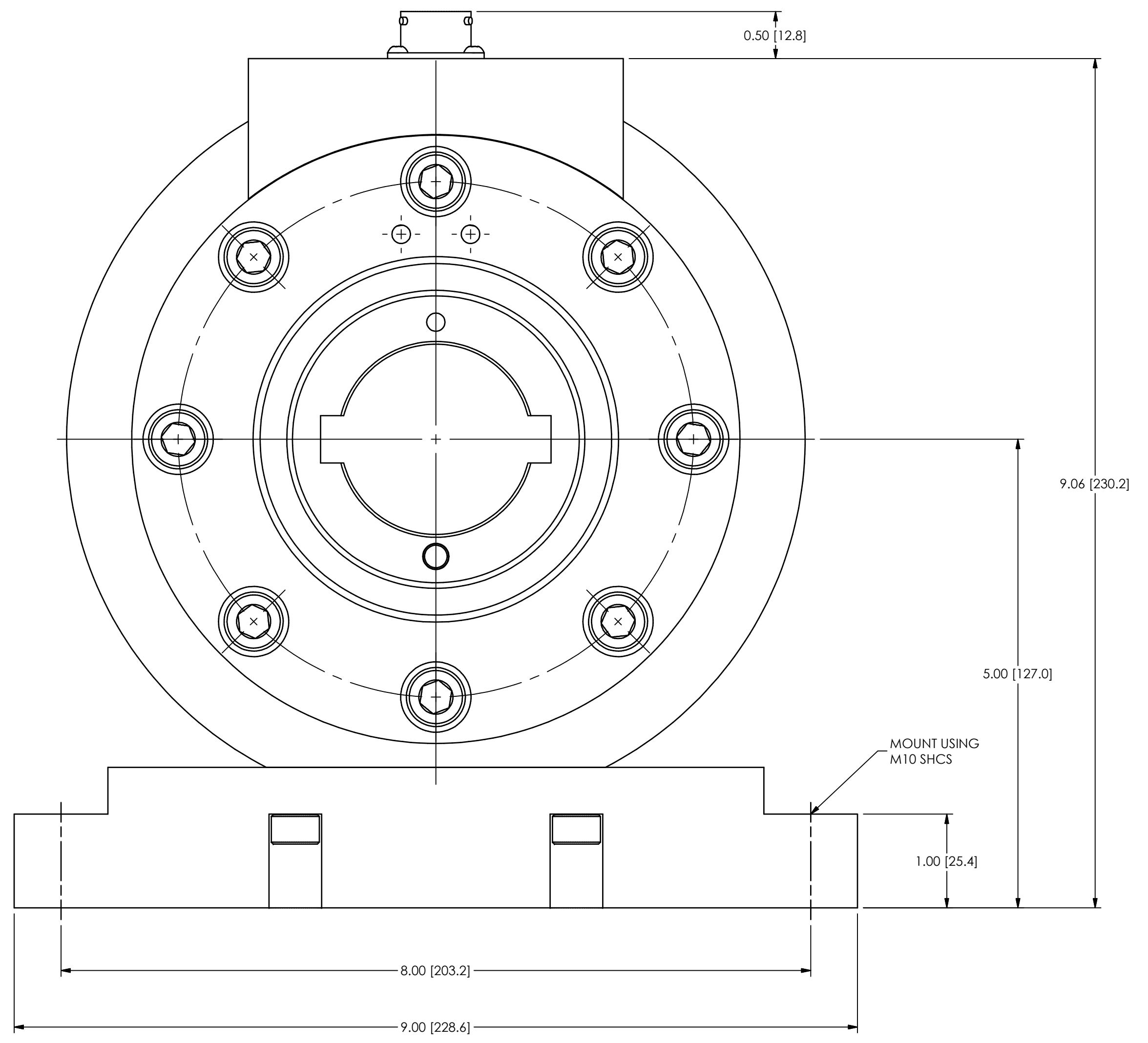
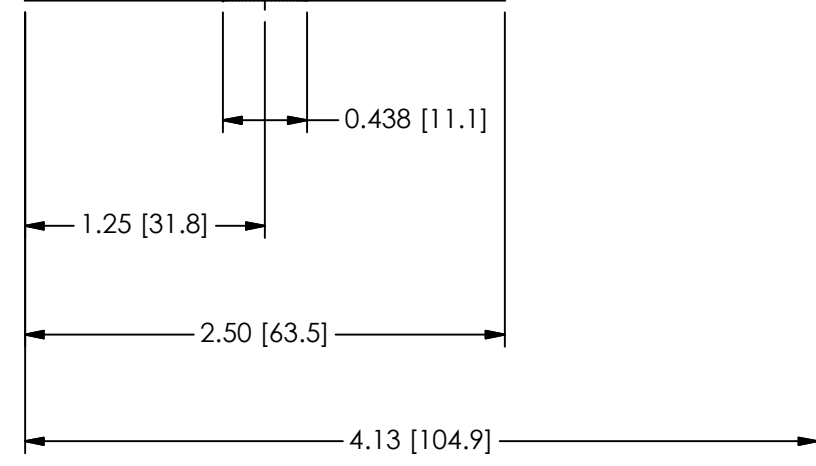
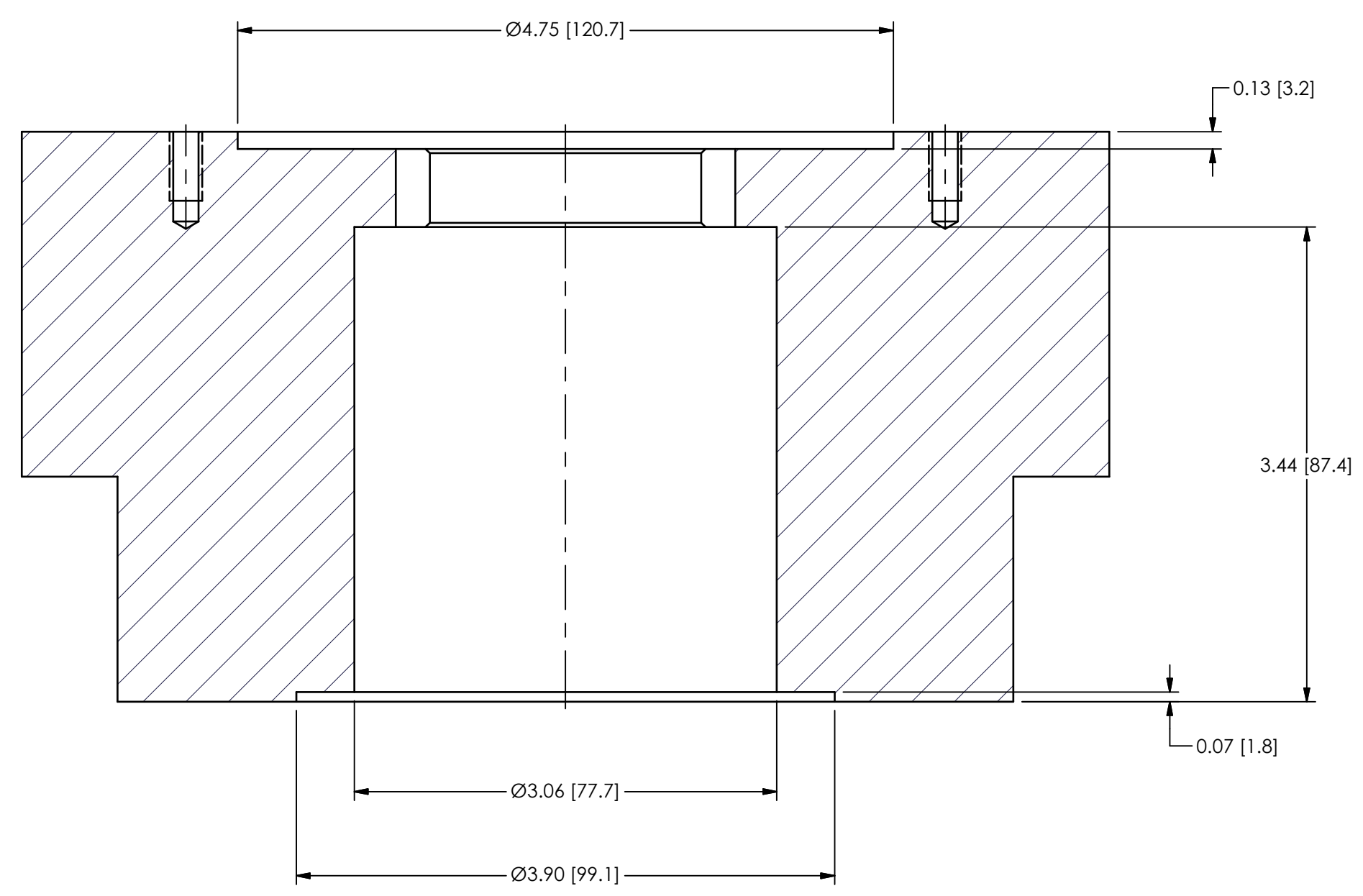
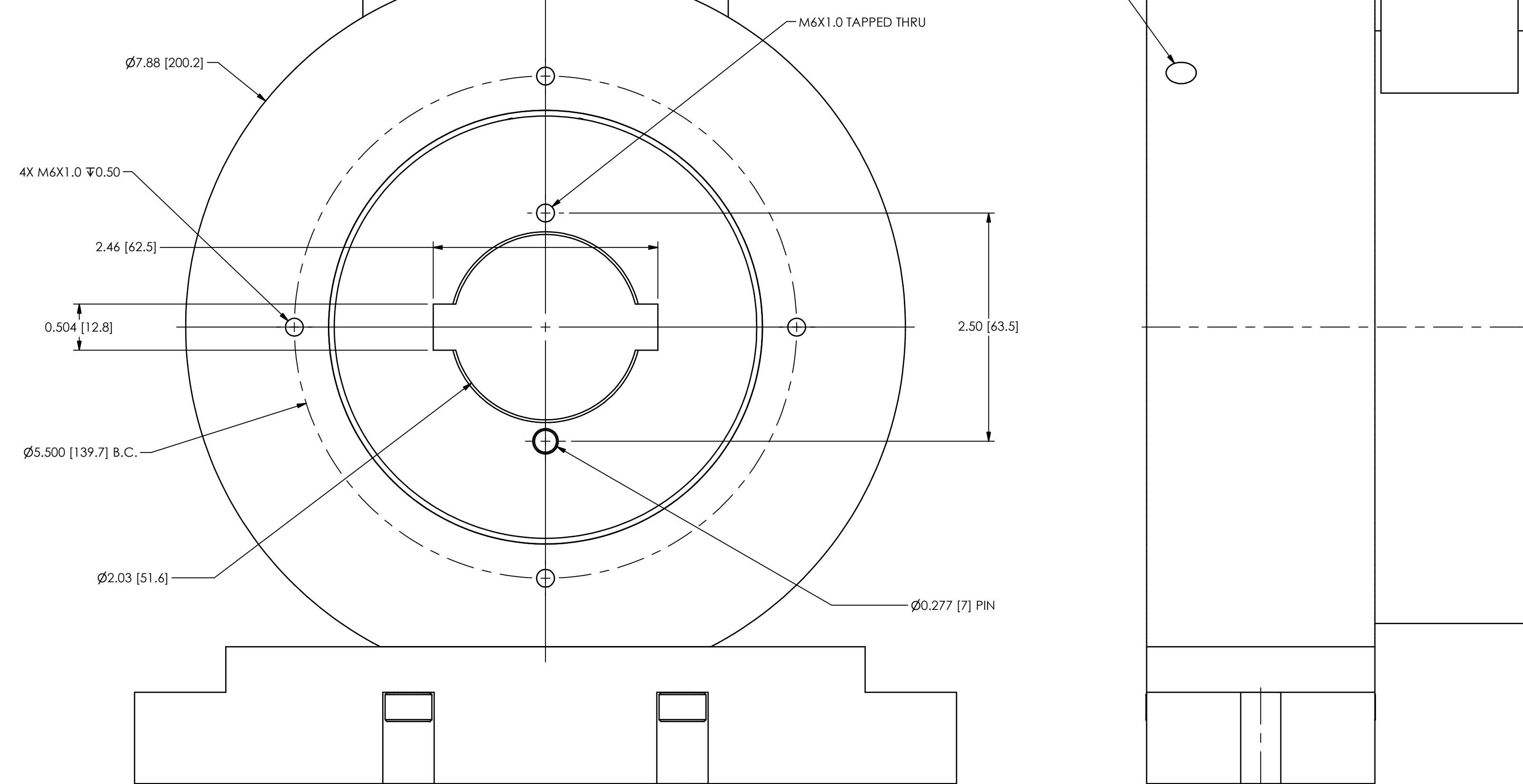


61662

PCB Load & Torque (A Division of PCB Piezotronics, Inc.) claims proprietary rights in the information disclosed herein. Neither it nor any reproduction thereof will be disclosed to others without the written consent of PCB Load and Torque.

REVISIONS		
REV	DESCRIPTION	ECO
A	UPDATED CONN. WIRING CODE - 01.05.18, PTE	47680

PUSH/TURN RECEPTACLE
(PT02E-12-10P OR EQUIV.)
WIRING CODE:
PIN A +EXC. (TENSION)
PIN B -EXC. (TENSION)
PIN C +SIG. (TENSION)
PIN D -SIG. (TENSION)
PIN E +EXC. (TORQUE)
PIN F -EXC. (TORQUE)
PIN G +SIG. (TORQUE)
PIN H +SENSE (TENSION)
PIN J -SIG. (TORQUE)
PIN K -SENSE (TENSION)



UNLESS OTHERWISE SPECIFIED TOLERANCES ARE:		DRAWN	CHECKED	ENGINEER	PCB LOAD & TORQUE A PCB GROUP COMPANY
DIMENSIONS IN INCHES	DIMENSIONS IN MILLIMETERS [IN BRACKETS]	JSD 05.18.15	PTE 05.02.17	JSD 05.18.15	
DECIMALS XX ± 0.1 XXX ± 0.05	DECIMALS X ± 0.3 XX ± 0.13	TITLE			24350 Indoplex Circle, Farmington Hills, MI 48335 (248) 888-8260 E-MAIL: info@pct.com
ANGLES ± 5 DEGREES	ANGLES ± 5 DEGREES	OUTLINE DRAWING FASTENER RESEARCH HEAD 9400, 9500, 9600 SERIES			DWG. NO. 61662
FILLETS AND RADI 0.15 MAX.	FILLETS AND RADI 0.38 MAX.	SCALE: FULL			SHEET 1 OF 1