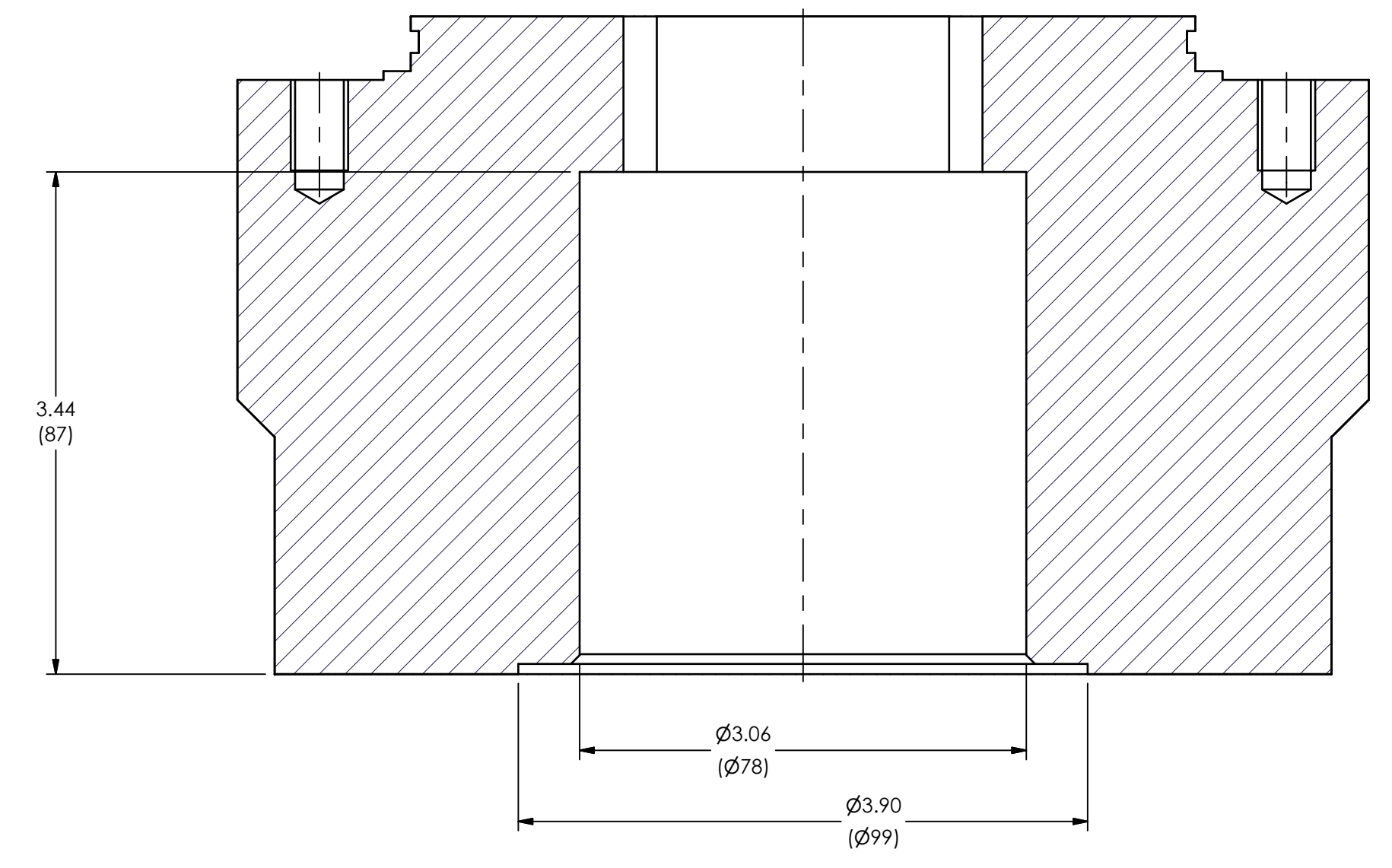
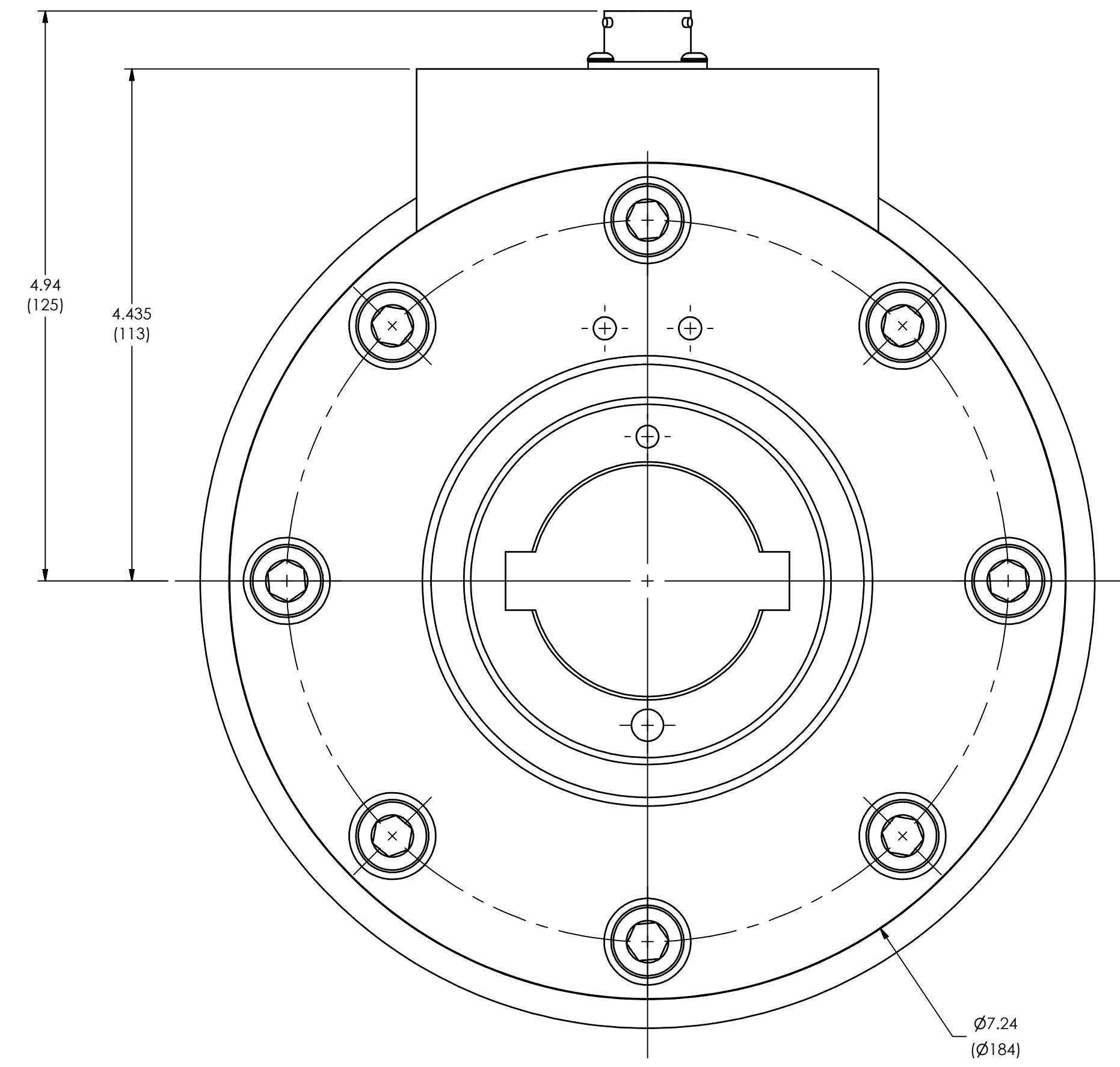
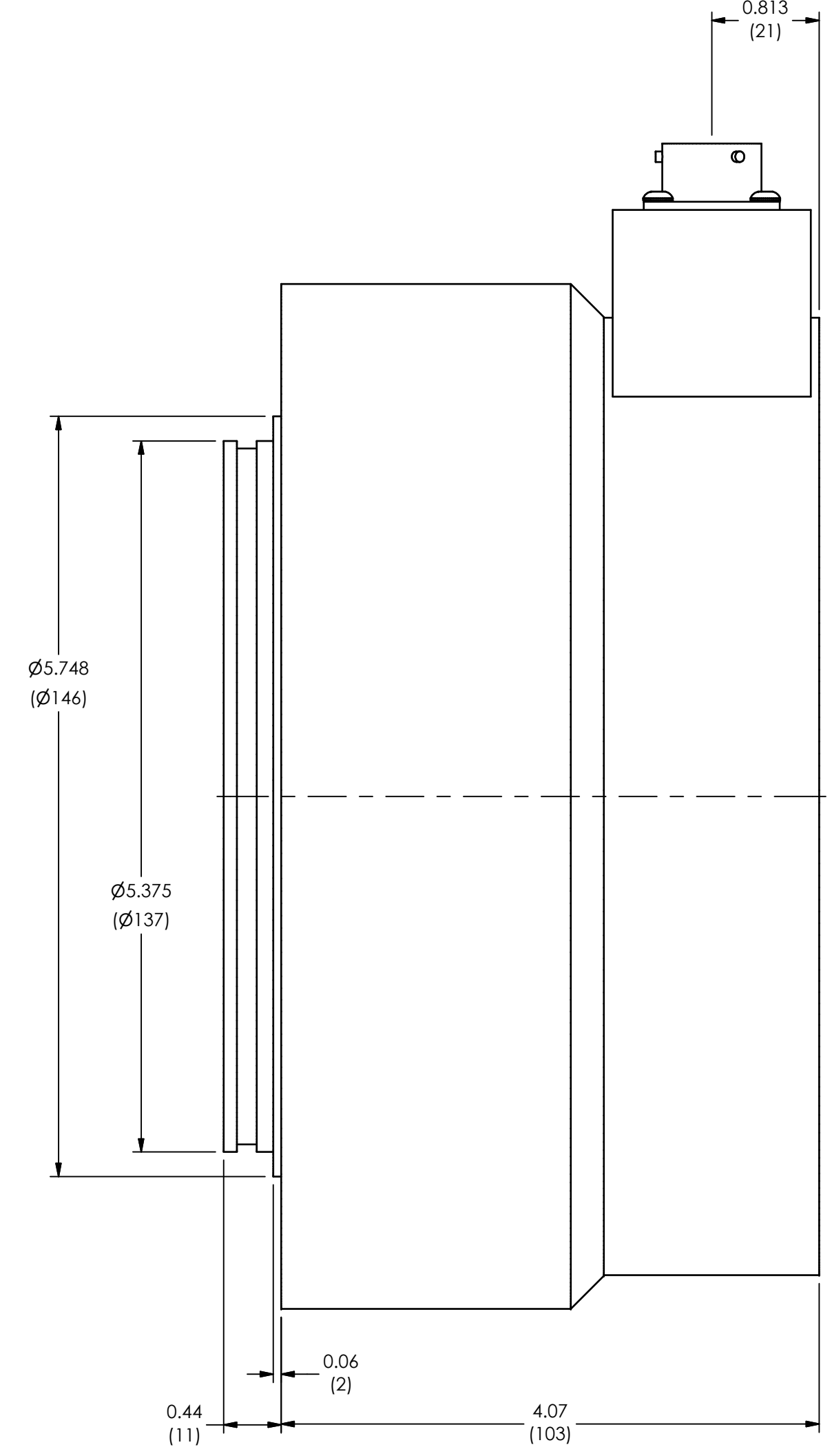
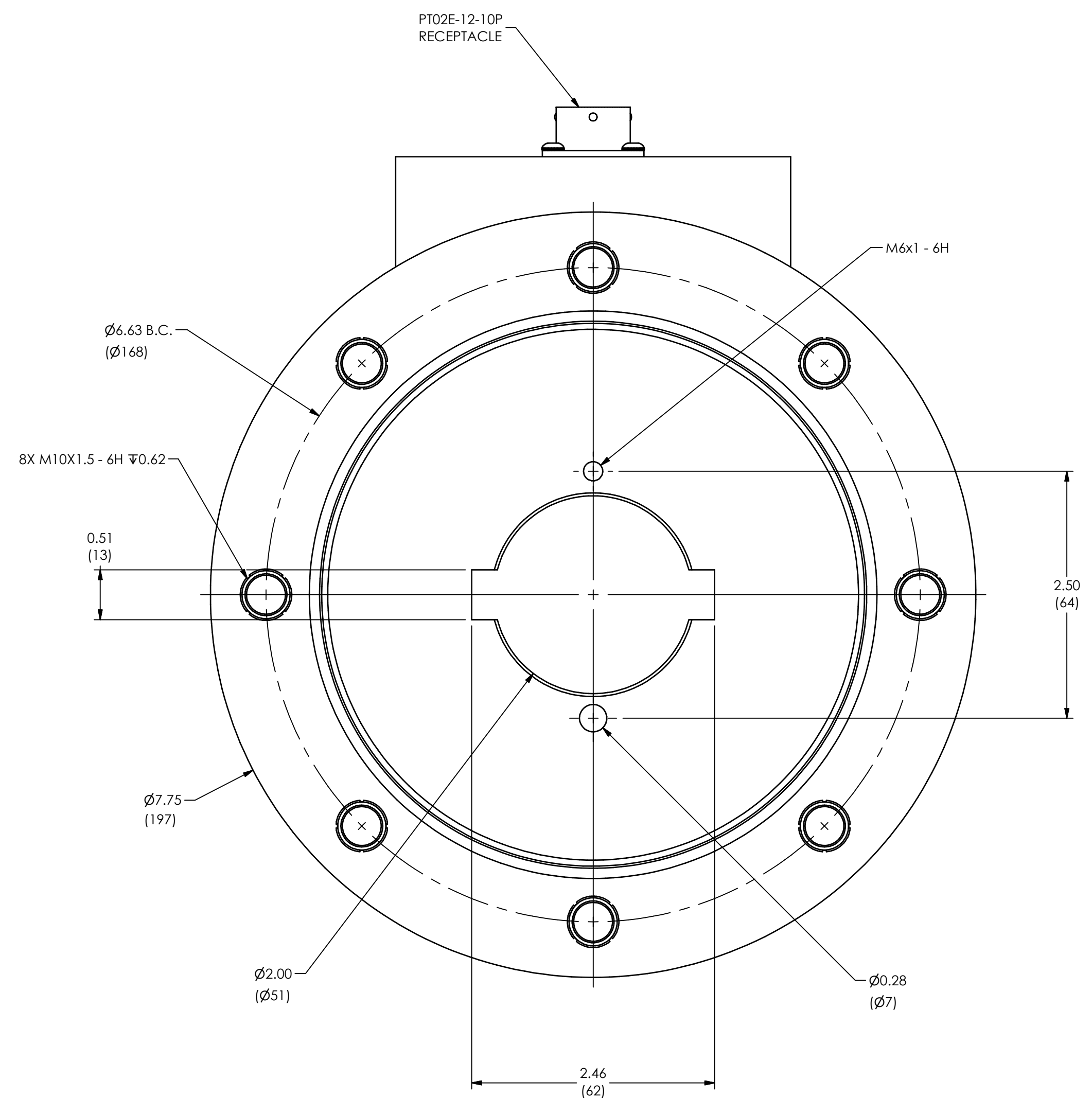
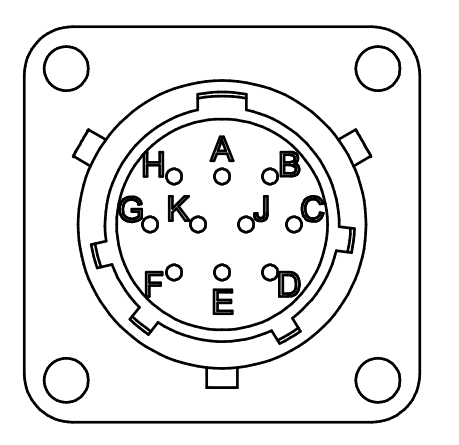


59140

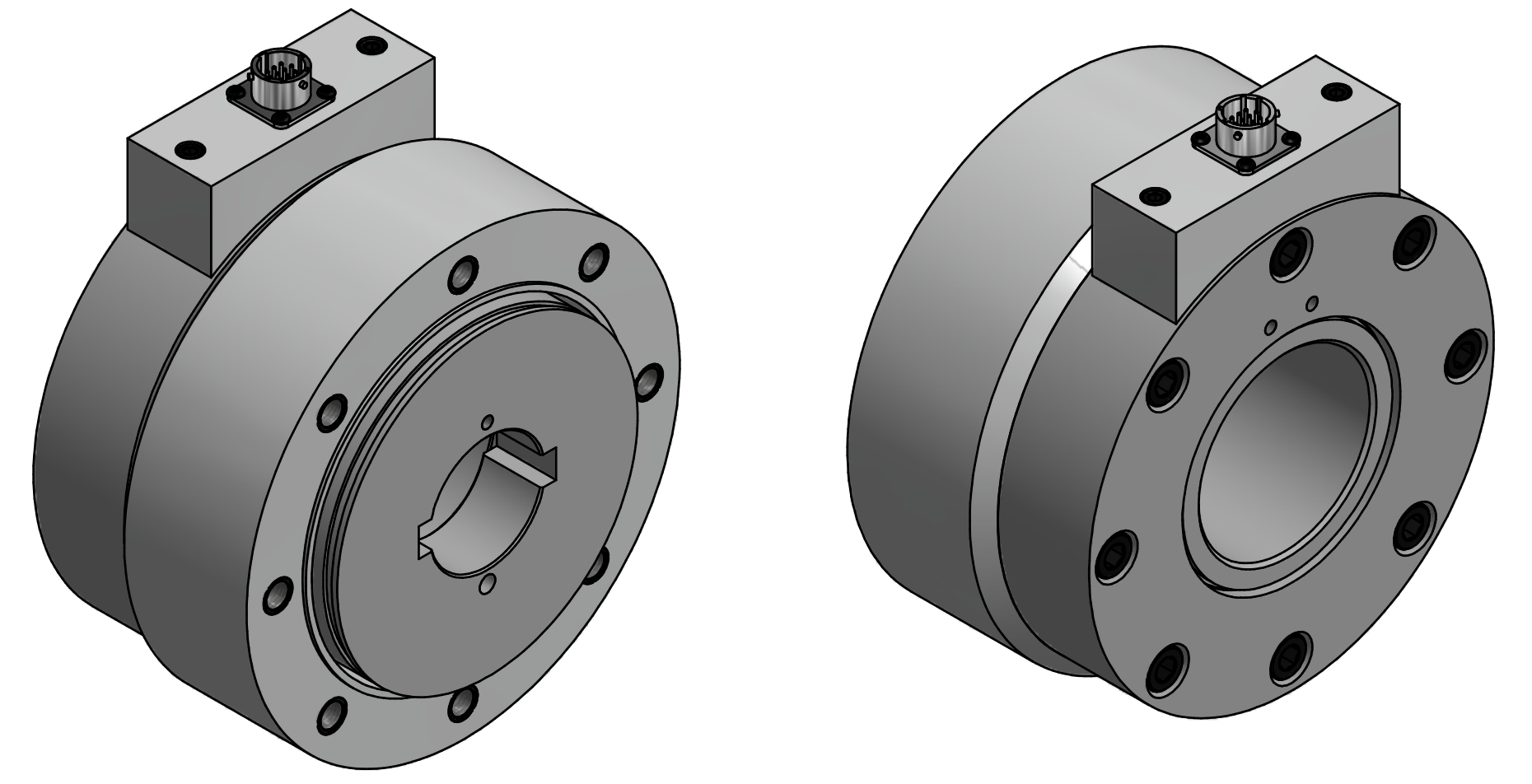
REVISIONS		
REV	DESCRIPTION	ECO
A	UPDATED CONN. WIRING CODE - 01.05.18, PTE	47680



PT02E-12-10P RECEPTACLE  
WIRING CODE



- PIN A +EXCITATION (TENSION)
- PIN B -EXCITATION (TENSION)
- PIN C +SIGNAL (TENSION)
- PIN D -SIGNAL (TENSION)
- PIN E +EXCITATION (TORQUE)
- PIN F -EXCITATION (TORQUE)
- PIN G +SIGNAL (TORQUE)
- PIN H +SENSE (TENSION)
- PIN J -SIGNAL (TORQUE)
- PIN K -SENSE (TENSION)



UNLESS OTHERWISE SPECIFIED TOLERANCES ARE:		DRAWN	CHECKED	ENGINEER	PCB LOAD & TORQUE A PCB GROUP COMPANY
DIMENSIONS IN INCHES	DIMENSIONS IN MILLIMETERS [ IN BRACKETS ]	JSD	PTE	JSD	
DECIMALS XX ±0.1 XXX ±0.05	DECIMALS X ±0.3 XX ±0.13	05.12.15	04.26.17	05.12.15	24350 Indoplex Circle, Farmington Hills, MI 48335 (748) 888-8260 E-MAIL: info@pct.com
ANGLES ± 5 DEGREES	ANGLES ± 5 DEGREES	TITLE			
FILLETS AND RADI Ø15 MAX	FILLETS AND RADI 0.38 MAX	OUTLINE DRAWING WHEEL NUT TEST STAND FASTENER RESEARCH HEAD			59140
SCALE: FULL					SHEET 1 OF 1