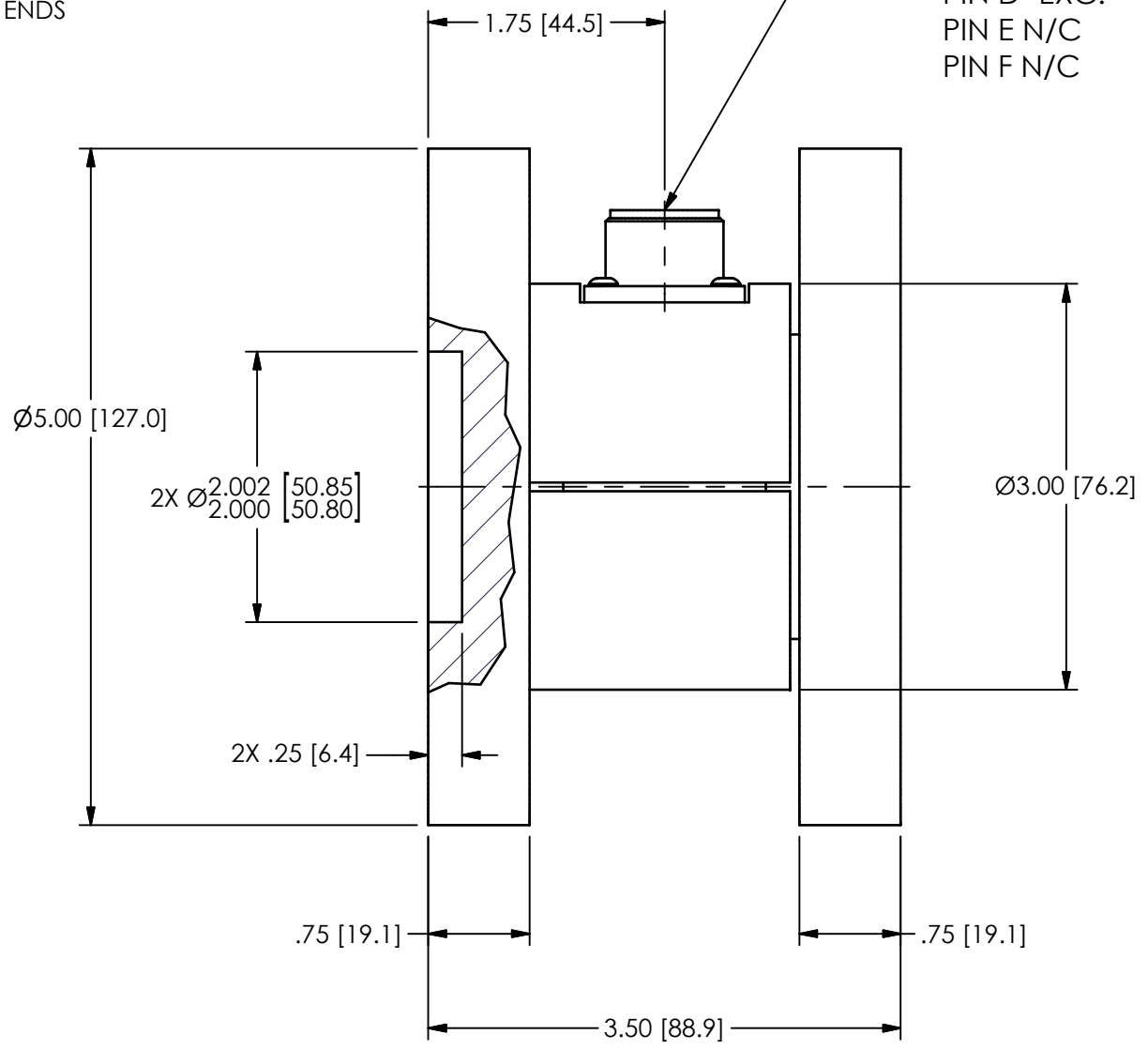
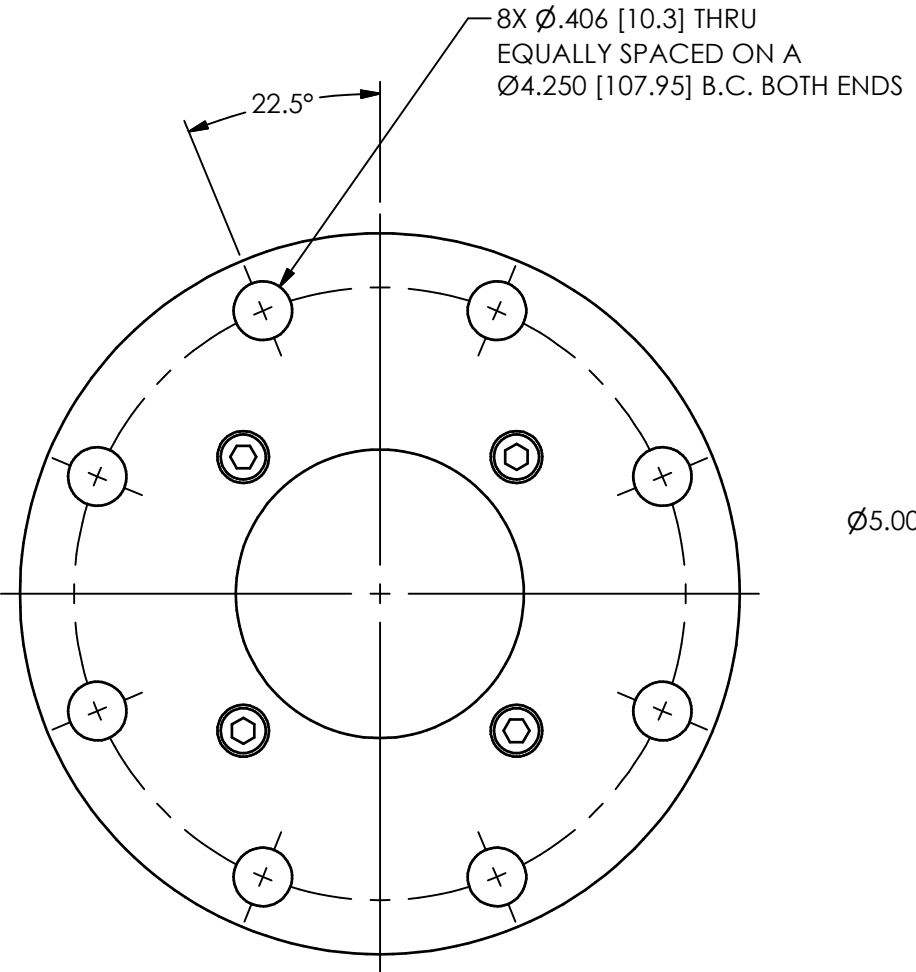


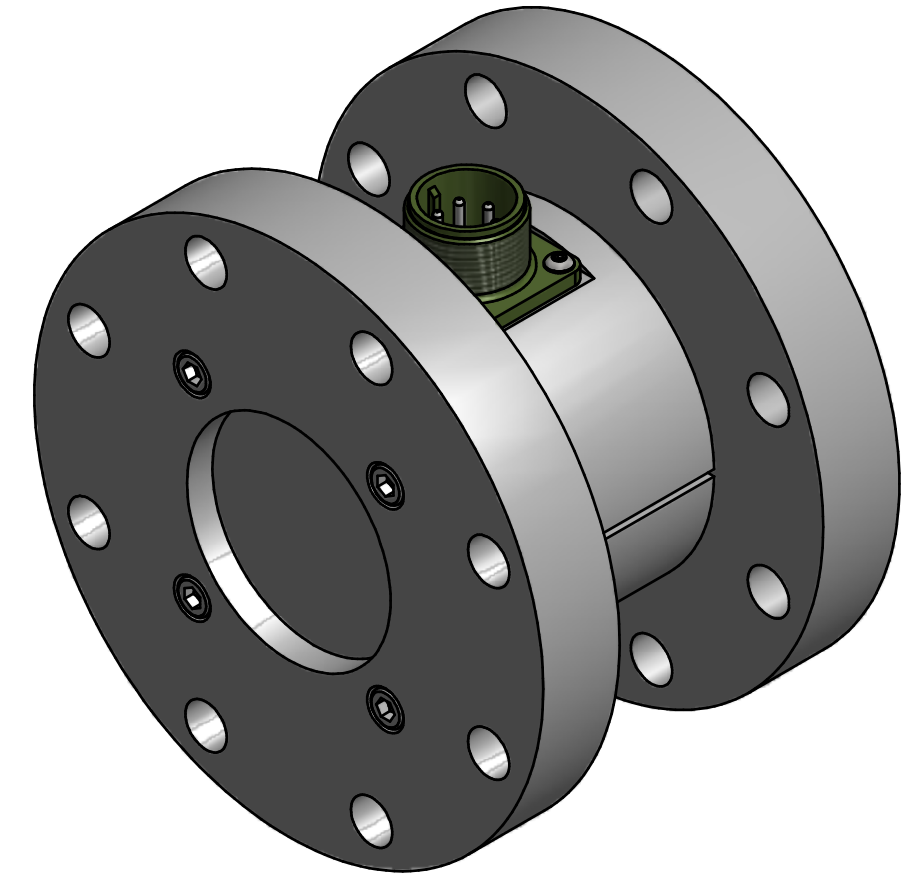
PCB Load & Torque (A Division of PCB Piezotronics, Inc.)
 claims proprietary rights in the information disclosed hereon.
 Neither it nor any reproduction thereof will be disclosed to
 others without the written consent of PCB Load and Torque.

26445

REVISIONS		
REV	DESCRIPTION	ECO
A	REDRAWN, REMOVED PIN OUT VIEW - 02.23.18, PTE	47634



CIRCULAR (MIL SPEC.) RECEPTACLE
 (AMPHONEL MS3102E-14S-6P OR EQUIV.)
 WIRING CODE (WR):
 PIN A +EXC.
 PIN B +SIG.
 PIN C -SIG.
 PIN D -EXC.
 PIN E N/C
 PIN F N/C



UNLESS OTHERWISE SPECIFIED TOLERANCES ARE:		DRAWN		CHECKED		ENGINEER		 PCB LOAD & TORQUE A PCB GROUP COMPANY
DIMENSIONS IN INCHES	DIMENSIONS IN MILLIMETERS [IN BRACKETS]	DMB	06.11.04	MJK	06.11.04	DMB	06.11.04	
DECIMALS XX ±.01 XXX ±.005	DECIMALS X ±.3 XX ±.13	TITLE OUTLINE DRAWING MODEL 2302-110-XXA SERIES REACTION TORQUE SENSOR						DWG. NO. 26445
ANGLES ±.5 DEGREES	ANGLES ±.5 DEGREES							SCALE: 3/4
FILLETS AND RADII .015 MAX	FILLETS AND RADII 0.38 MAX							