

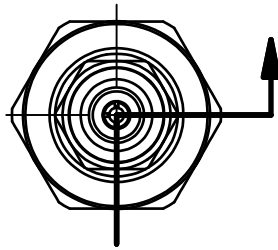
2

1

061-1070-90

PCB Piezotronics Inc. claims proprietary rights in the information disclosed hereon. Neither it nor any reproduction thereof will be disclosed to others without the written consent of PCB Piezotronics Inc.

REVISIONS		
REV	DESCRIPTION	DIN
B	REMOVED ICP DIMENSION	48296



ELECTRICAL CONNECTOR  
COAXIAL 10-32 UNF - 2A  
TRANSDUCER (NOT SUPPLIED)

MODEL 060A05  
CLAMP NUT  
M7 X 0.75 THREAD  
1/4 HEX (NOT SUPPLIED)

MODEL 061A07  
THREAD ADAPTOR  
11mm HEX (SUPPLIED)

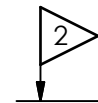
MODEL 065A40  
SEAL BRASS  
.030 [.76] THICKNESS

MODEL 065A02  
SEAL  
(NOT SUPPLIED)

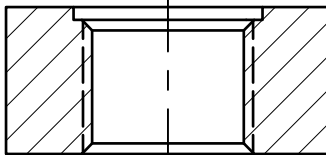
M10x1 - 6g

.77 [19.4]

.34 [8.6]



1 .34 [8.6]



MOUNTING HOLE PREPARATION:  
M10x1 - 6H THRU  
└┐∅.437 [11.10] ▽.030 [.76]

- 4 RECOMMENDED MOUNTING TORQUE ON THREAD ADAPTOR (11mm HEX) 5-8 ft-lbs [6.7-10.8 Nm]
- 3 RECOMMENDED MOUNTING TORQUE ON CLAMP NUT (1/4 HEX) 25-35 in-lbs [.34-.47 Ncm]
- 2 SEAL SURFACE MUST BE FLAT & FREE OF TOOL MARKS WITH A MIN OF A 63 SURFACE FINISH
- 1 DIMENSIONS SHOWN ARE FOR .34 [8.6] WALL THICKNESS, COUNTERBORE FOR THICKER WALLS

UNLESS OTHERWISE SPECIFIED TOLERANCES ARE:		DRAWN		CHECKED		ENGINEER		 3425 WALDEN AVE. DEPEW, NY 14043 (716) 684-0001 E-MAIL: sales@pcb.com		
DIMENSIONS IN INCHES	DIMENSIONS IN MILLIMETERS [IN BRACKETS]	KRM	5/31/18	KRM	5/31/18	MJK	5/31/18			
DECIMALS XX ±.01 XXX ±.005	DECIMALS X ± 0.3 XX ± 0.13	TITLE INSTALLATION DRAWING MODEL 061A07 THREAD ADAPTOR							CODE IDENT. NO. 52681	DWG. NO. 061-1070-90
ANGLES ± 2 DEGREES	ANGLES ± 2 DEGREES								SCALE: 2.25X	SHEET 1 OF 1
FILLETS AND RADII .003 - .005	FILLETS AND RADII 0.07 - 0.13									

2

1