



# NEW PRODUCT RELEASES BY PCB PIEZOTRONICS

 Including **Endevco** sensors, electronics, and cables

September, 2024



# ACCELEROMETERS FOR SHOCK & VIBRATION MEASUREMENTS

CE



## MINIATURE TRIAXIAL ICP® ACCELEROMETERS

MODELS TLD356A01 & TLD356A03

Measurement Range:  
 $\pm 1k$  g pk ( $\pm 9810$  m/s<sup>2</sup>),  
 $\pm 500$  g pk ( $\pm 4905$  m/s<sup>2</sup> pk)

Sensitivity ( $\pm 20\%$ ): 5 mV/g (0.51 mV/(m/s<sup>2</sup>)), 10 mV/g (1.02 mV/(m/s<sup>2</sup>))

TEDS enabled

Ground isolated models available

CE



## TRIAXIAL CHARGE OUTPUT ACCELEROMETER

MODEL 357A67

Measurement Range:  $\pm 1k$  g pk  
( $\pm 9800$  m/s<sup>2</sup> pk)

Sensitivity ( $\pm 15\%$ ): 3 pC/g  
(0.306 pC/(m/s<sup>2</sup>))

Temperature Range: -76 to +392 °F  
(-60 to +200 °C)

Weight: 0.54 oz (15 gm)

Σ

CE



## TRIAXIAL ANGULAR RATE SENSOR

ENDEVCO MODEL 7330

Measurement Range: 100, 500,  
1.5k, 6k, 8k, 12k, and 18k deg/sec

Sensitivity: 20, 4, 1.333, 0.333,  
0.25, 0.167, and 0.111 mV/deg/sec

Frequency Range: Up to 2 kHz

Weight: 0.32 oz (9.0 gm)

Σ

CE



## TRIAXIAL PIEZORESISTIVE ACCELEROMETERS


ENDEVCO MODELS 713AL & 713FL

Measurement Range:  $\pm 2k$  g

Sensitivity: 600 mV full scale output

Frequency Response ( $\pm 5\%$ ):  
0 to 3.5k Hz

Built-in ESD protection



### END OF LINE TESTING KIT

MODEL 300A31

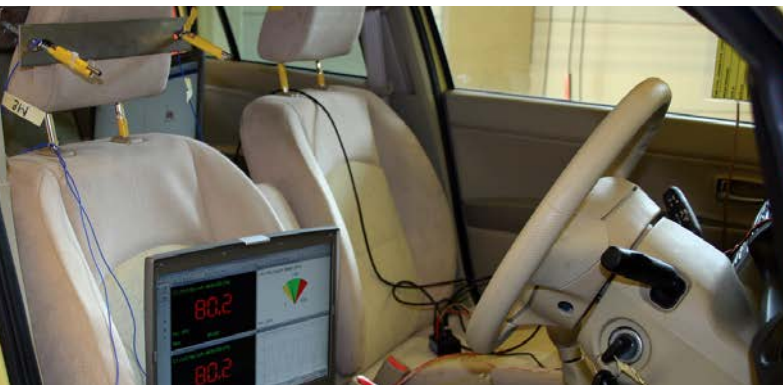
353B18 ICP® accelerometer +  
080A245 testing probe

Sensitivity: 10 mV/g

Measurement Range:  $\pm 500$  g

Upper Frequency Limit: 10 kHz

TEDS compatible



## MICROPHONES FOR ACOUSTIC MEASUREMENTS



### LOW NOISE 1/4" FREE-FIELD MICROPHONE AND PREAMPLIFIER SYSTEM

MODEL 378A08

Inherent Noise: 22 dB(A) re 20  $\mu$ Pa

Sensitivity: 50 mV/Pa

Frequency Range ( $\pm 2$  dB): 12 to 20k Hz

Multiple field usage; minimal impact when used in different fields and orientations



### ICP® ARRAY SHORT MICROPHONE WITH INTEGRAL PREAMPLIFIER, 10-32 CONNECTOR, TEDS

MODEL 130A25

Inherent Noise: 24 dB(A) re 20  $\mu$ Pa

Sensitivity: 45 mV/Pa

Frequency Range ( $\pm 4$  dB): 12 to 20k Hz

Short, low profile array microphone; 1.35 in. length

### CHOOSING THE RIGHT PRECISION MICROPHONE

With numerous microphone and preamplifier combinations available, selecting the right system can be challenging. Download the PCB Microphone Handbook for expert guidance on selection, maintenance, calibration, and more.





## PRESSURE SENSORS FOR RESEARCH & DEVELOPMENT

CE



### UHT-12™ CHARGE OUTPUT PRESSURE SENSOR

MODEL 176A33

Wide Temperature Range: -94 to 1400 °F (-70 to 760 °C)

Measurement Range: 3 kpsi (206.8 bar)

Unique design eliminates the need for water cooling

Intrinsic safety approvals: ATEX, IECEx

CE



### UHT-12™ CHARGE OUTPUT PRESSURE SENSOR

MODEL 112A06

Wide Temperature Range: -400 to +662 °F (-240 to +350 °C)

Measurement Range: 5 kpsi (34,475 kPa)

Resonant Frequency: >200 kHz

Acceleration Compensated: 0.01 psi/g

### WHAT IS UHT-12™ TECHNOLOGY?

UHT-12™ technology eliminates pyroelectric noise up to 1400°F (760°C), maintaining sensitivity across a wide temperature range. With isolated shear mode crystals to prevent base strain and transverse measurement errors, UHT-12™ sensors offer proven reliability in demanding research and monitoring environments.



# SENSORS FOR MACHINERY HEALTH MONITORING

CE



## IO-LINK® VIBRATION SENSOR

MODEL 674A91

Frequency Range (Acceleration):  
1 to 10k Hz

Frequency Range (Velocity):  
2 – 10k Hz

Max Crest Factor: 50

Measures true peak acceleration,  
RMS acceleration, RMS velocity,  
crest factor and temperature output



## MICROPOWER EMBEDDABLE ACCELEROMETERS

MODELS 66203RPZ1 & 66213RPZ1

Sensitivity: 50 or 100 mV/g

Frequency Response ( $\pm 3$  dB):  
1 – 12.5k Hz

Current Draw: 60  $\mu$ A

Power Up and Settling Time: 350  $\mu$ s

CE



## 4-20 MA VELOCITY TRANSMITTERS WITH M12 CONNECTOR

MODELS 655A9X & 656A9X

Measurement Range: 0.5, 1, 2  
in/sec pk (655A9X) or RMS  
(656A9X)

Frequency Range ( $\pm 3$ dB):  
3.5 to 2k Hz

Temperature Range: -40 to 221 °F  
(-40 to 105 °C)



## MECHANICAL VIBRATION SWITCH WITH HAZARDOUS APPROVALS

MODEL EX685A09

Measurement Range: 0 to 7 g pk (0 to 68.7 m/s<sup>2</sup> pk)

Frequency Range: 0 to 600 cpm (0 to 100 Hz)

Measures shock and vibration in three planes of motion

IP66 rated

CE



## TEMPERATURE OUTPUT TRIAXIAL ICP® ACCELEROMETER

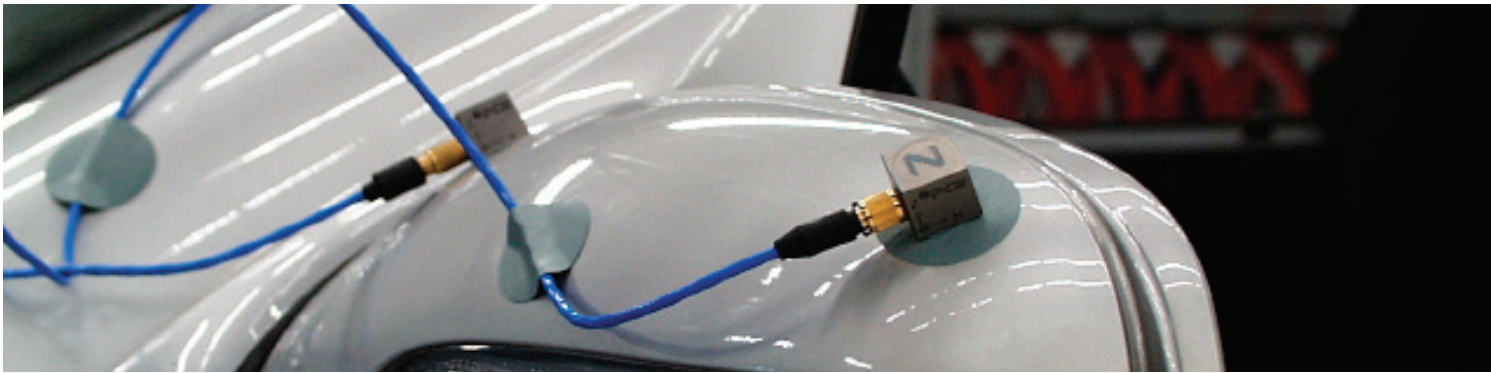
MODEL T0604B91

Measurement Range:  $\pm 50$  g ( $\pm 490$  m/s<sup>2</sup>)

Sensitivity ( $\pm 20\%$ ): 100 mV/g (10.2 mV/(m/s<sup>2</sup>))

Frequency Range: ( $\pm 3$ dB) 30 to 300k cpm (0.5 to 5k Hz)

Temperature Range: -65 to +250 °F (-54 to +121 °C)



## CONNECTORS & CABLE ASSEMBLIES



CE

### 4-20 MA TRANSMITTER M12 CABLES

MODEL 052PZXXX

- For use with single axis accelerometers
- Shielded polyurethane, 2-conductor cable
- Twisted pair with drain
- 5-socket M12 connector
- Multiple lengths



CE

### 3-COAX CABLE WITH ISOLATED 1/4-28 4-SOCKET PLUG TO (3) 10-32 PLUGS

MODELS 523R10 & 523SRXXXSV

- For use with charge triaxial accelerometers
- Low-noise bundled cable assembly
- Temperature rated to 392 °F (200 °C)
- 10 ft. stock length (523R10) with configurable lengths available

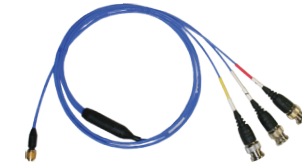


Σ  
CE

### 4-CONDUCTOR CABLE WITH 1/4-28 4-SOCKET WIRE LOCK HEX PLUG TO PIGTAIL LEADS

ENDEVCO MODEL 3027BVM14

- For use with ICP/IEPE triaxial and PR uniaxial accelerometers
- High strength, flexible, PFA jacketed cable
- Temperature rated to 392 °F (200 °C)
- 120 in. stock length with configurable lengths available



CE

### SHIELD GROUNDED 1/4-28 4-SOCKET PLUG TO (3) BNC PLUGS

MODELS 010TXX & 034TXX

- For use with ground isolated ICP/IEPE triaxial accelerometers
- General purpose (010Txx) and low noise (034Txx) models
- Available lengths: 10, 20 and 30 ft.
- Ideal for applications around EMI



# ELECTRONICS



## PE/IEPE SIGNAL CONDITIONER

ENDEVCO MODEL 2775C

Input: single channel PE, IEPE, or in-line RCC

Outputs: acceleration, velocity, and displacement

Programmable AC, DC, or Servo outputs

Configurable Filtering: low-pass, high-pass, or band pass

Gain up to 10k



## DIFFERENTIAL PIEZOELECTRIC SIGNAL CONDITIONER

ENDEVCO MODEL 6634D

Input: PE, Differential PE, IEPE, VELCOIL, and RCC

Outputs: acceleration, velocity, and displacement

Programmable AC and DC outputs

Configurable Filtering: low-pass, high-pass, or band pass

SCPI remote control API



**3425 Walden Avenue, Depew, NY 14043 USA**

pcb.com | info@pcb.com | 800 828 8840 | +1 716 684 0001



**10869 NC Highway 903, Halifax, NC 27839 USA**

endevco.com | sales@endevco.com | 866 363 3826

© 2024 PCB Piezotronics - all rights reserved. PCB Piezotronics is a wholly-owned subsidiary of Amphenol Corporation. Endevco is an assumed name of PCB Piezotronics of North Carolina, Inc., which is a wholly-owned subsidiary of PCB Piezotronics, Inc. Accumetrics, Inc. and The Modal Shop, Inc. are wholly-owned subsidiaries of PCB Piezotronics, Inc. IMI Sensors and Larson Davis are Divisions of PCB Piezotronics, Inc. Except for any third party marks for which attribution is provided herein, the company names and product names used in this document may be the registered trademarks or unregistered trademarks of PCB Piezotronics, Inc., PCB Piezotronics of North Carolina, Inc. (d/b/a Endevco), The Modal Shop, Inc. or Accumetrics, Inc. Detailed trademark ownership information is available at [www.pcb.com/trademarkownership](http://www.pcb.com/trademarkownership).

Corp-WhatsNew-0924