



# PLATINUM STOCK SENSORS



## **SAME DAY SHIPPING – LIFETIME WARRANTY**

# **PLATINUM STOCK SENSORS**

## **OVER 10,000 SENSORS IN STOCK, READY TO SHIP!**

At PCB®, we don't just know the sensor business; we pioneered ICP® technology. For over 50 years, every sensor design and assembly is subjected to tight in-house inspection and quality control. That's why we have impeccable product performance and longevity, the expectation our customers have for every PCB sensor.

Platinum Stock Sensors program is one of the ways we live up to our Total Customer Satisfaction guarantee. Driven by customer demand, these sensors are the best fit for typical R&D, product testing, and industrial monitoring applications. Platinum Stock Sensors ship fast and are backed by a lifetime warranty - if you are not 100% satisfied, simply send them back. We'll repair or replace them, guaranteed. No questions asked!

## GENERAL PURPOSE ICP® ACCELEROMETERS

MODEL 352C03



10 mV/g (1.02 mV/ (m/s<sup>2</sup>)), 0.5 to 10 kHz

10-32 side connector

Ceramic shear

MODEL 352C04



10 mV/g (1.02 mV/ (m/s<sup>2</sup>)), 0.5 to 10 kHz

10-32 top connector

Ceramic shear

MODEL 353B03



10 mV/g (1.02 mV/ (m/s<sup>2</sup>)), 1 to 7 kHz

10-32 side connector

Quartz shear

MODEL 353B04



10 mV/g (1.02 mV/ (m/s<sup>2</sup>)), 1 to 7 kHz

10-32 top connector

Quartz shear

## HIGH SENSITIVITY ICP® ACCELEROMETERS

MODEL 352C33



100 mV/g (10.2 mV/ (m/s<sup>2</sup>)), 0.5 to 10 kHz

10-32 side connector

Ceramic shear

MODEL 352C34



100 mV/g (10.2 mV/ (m/s<sup>2</sup>)), 0.5 to 10 kHz

10-32 top connector

Ceramic shear

MODEL 353B33



100 mV/g (10.2 mV/ (m/s<sup>2</sup>)), 1 to 4 kHz

10-32 side connector

Quartz shear

MODEL 353B34



100 mV/g (10.2 mV/ (m/s<sup>2</sup>)), 1 to 4 kHz

10-32 top connector

Quartz shear



## HIGH SENSITIVITY ICP® TRIAXIAL ACCELEROMETERS



MODEL 356A15

100 mV/g (10.2 mV/(m/s<sup>2</sup>)), 2 to 5 kHz

1/4-28 4-pin connector

Ceramic shear

Titanium housing



MODEL 356B18

1000 mV/g (102 mV/(m/s<sup>2</sup>)), 0.5 to 3 kHz

1/4-28 4-pin connector

Ceramic shear

Aluminum housing



MODEL 356A16

100 mV/g (10.2 mV/(m/s<sup>2</sup>)), 0.5 to 5 kHz

1/4-28 4-pin connector

Ceramic shear

Aluminum housing



MODEL 356A17

500 mV/g (51 mV/(m/s<sup>2</sup>)), 0.5 to 3 kHz

1/4-28 4-pin connector

Ceramic shear

Aluminum housing



500°F  
(260 °C)



## HIGH TEMPERATURE CHARGE OUTPUT ACCELEROMETER

MODEL 357B03

- 10 pC/g (1.02 pC/(m/s<sup>2</sup>)), 9 kHz
- 10-32 side connector
- Ceramic shear
- 95 °F to +500 °F (-71 °C to + 260 °C)



## GENERAL PURPOSE ICP® TRIAXIAL ACCELEROMETERS

MODEL 356A02

MODEL 356A25

- |   |  |
|---|--|
| 10 mV/g (1.02 mV/(m/s <sup>2</sup> )), 1 to 5 kHz | 25 mV/g (2.6 mV/(m/s <sup>2</sup> )), 1 to 5 kHz |
| 1/4-28 4-pin connector                            | 1/4-28 4-pin connector                           |
| Ceramic shear                                     | Ceramic shear                                    |
| Titanium housing                                  | Titanium housing                                 |



## MINIATURE ICP® TRIAXIAL ACCELEROMETERS WITH TEDS

MODEL 356A43

MODEL 356A44

- |   |  |
|---|--|
| 10 mV/g (1.02 mV/(m/s <sup>2</sup> )),<br>0.7 Hz to 7 kHz | 50 mV/g (5.1 mV/(m/s <sup>2</sup> )),<br>0.7 Hz to 7 kHz |
| 1/4-28 4-pin connector                                    | 1/4-28 4-pin connector                                   |
| Titanium housing  | Titanium housing   |
| 0.4 in (10.2 mm) cube                                     | 0.4 in (10.2 mm) cube                                    |

MODEL 356A45

- 100 mV/g (10.2 mV/(m/s<sup>2</sup>)),  
0.7 Hz to 7 kHz
- 1/4-28 4-pin connector
- Titanium housing
- 0.4 in (10.2 mm) cube

## MINIATURE ICP® ACCELEROMETERS



MODELS 352C23 & 352C23/NC

5 mV/g (0.5 mV/(m/s<sup>2</sup>)), 2 to 10 kHz  
(0.2 gm)

3-56 side connector

Ceramic shear

Aluminum housing



MODEL 352A73

5 mV/g (0.5 mV/(m/s<sup>2</sup>)), 2 to 10 kHz  
(0.3 gm)

10-ft (3 mm) Integral cable

Ceramic shear

Titanium housing



MODELS 352A21 & 352A21/NC

10 mV/g (1.0 mV/(m/s<sup>2</sup>)), 1 to 10  
kHz (0.6 gm)

10-ft (3-m) cable

3-56 side connector

Ceramic shear

Titanium housing



MODELS 352C22 & 352C22/NC

10 mV/g (1.0 mV/(m/s<sup>2</sup>)),  
1 to 10 kHz (0.5 gm)

10-ft (3-m) cable

3-56 side connector

Ceramic shear

Aluminum housing



MODELS 352A24 & 352A24/NC

100 mV/g (10.2 mV/(m/s<sup>2</sup>)),  
1 to 8 kHz (0.8 gm)

10-ft (3-m) cable

3-56 side connector

Ceramic shear

Aluminum housing



MODELS 353B15 & M353B15  
(5-40 UNF) & (M3 X 0.5)

10 mV/g (1.0 mV/(m/s<sup>2</sup>)),  
1 to 10 kHz (2 gm)

5-44 side connector

Quartz shear

Titanium housing



MODELS 352C65 & M352C65  
(5-40 UNF) & (M3 X 0.5)

100 mV/g (10.2 mV/(m/s<sup>2</sup>)),  
0.5 to 10 kHz (2 gm)

5-44 side connector

Ceramic shear

Titanium housing



MODELS 353B17 & M353B17  
(5-40 UNF) & (M3 X 0.5)

10 mV/g (1.0 mV/(m/s<sup>2</sup>)),  
1 to 10 kHz (1.7 gm)

10-ft integral cable

Quartz shear

Titanium housing



MODELS 353B18, M353B18 & 352C68  
(5-40 UNF), (M3 X 0.5) & (5-40 UNF)

10 mV/g (1.0 mV/(m/s<sup>2</sup>)), 1 to 10 kHz  
(1.8 gm) - 353B18 & M353B18

100 mV/g (10.2 mV/(m/s<sup>2</sup>)),  
0.5 to 10 kHz (2.0 gm) - 352C68

10-32 top connector

Quartz shear - 353B18 & M353B18

Ceramic shear - 352C68

Titanium housing

\*/NC Models do not include an extension cable.

## MINIATURE ICP® TRIAXIAL ACCELEROMETERS



MODELS 356A01 & 356A01/NC

5 mV/g (0.51 mV/(m/s<sup>2</sup>)),  
2 to 5 kHz (1.0 gm)

5-ft (1.5-m) integral cable plus  
5-ft (1.5 m) extension cable  
w/BNC plug termination

Ceramic shear

+250 °F (121 °C)  
operating temperature

0.25 in (6.35 mm) cube,

Titanium housing



MODELS 356A03 & 356A03/NC

10 mV/g (1.02 mV/(m/s<sup>2</sup>)),  
2 to 5 kHz (1.0 gm)

5-ft (1.5-m) integral cable plus  
5-ft (1.5 m) extension cable  
w/BNC plug termination

Ceramic shear

+250 °F (121 °C)  
operating temperature

0.25 in (6.35 mm) cube

Titanium housing



MODELS HT356B01 & HT356B01/NC

Same as 356A01 with +356 °F  
(180 °C) operating temperature



MODELS 356B21 & 356B21/NC

10 mV/g (1.02 mV/(m/s<sup>2</sup>)),  
2 to 7 kHz (4 gm)

10-ft (3-m) cable

Mini 8-36 4-pin connector

+250 °F (121 °C) operating  
temperature

Titanium housing



MODEL 356A33

10 mV/g (1.02 mV/(m/s<sup>2</sup>)), 2 to 7  
kHz (5.3 gm)

1/4-28 4-pin connector

Ceramic shear

Titanium housing



MODELS 356A32 & 356A32/NC

100 mV/g (10.2 mV/(m/s<sup>2</sup>)),  
1 to 4 kHz (5.4 gm)

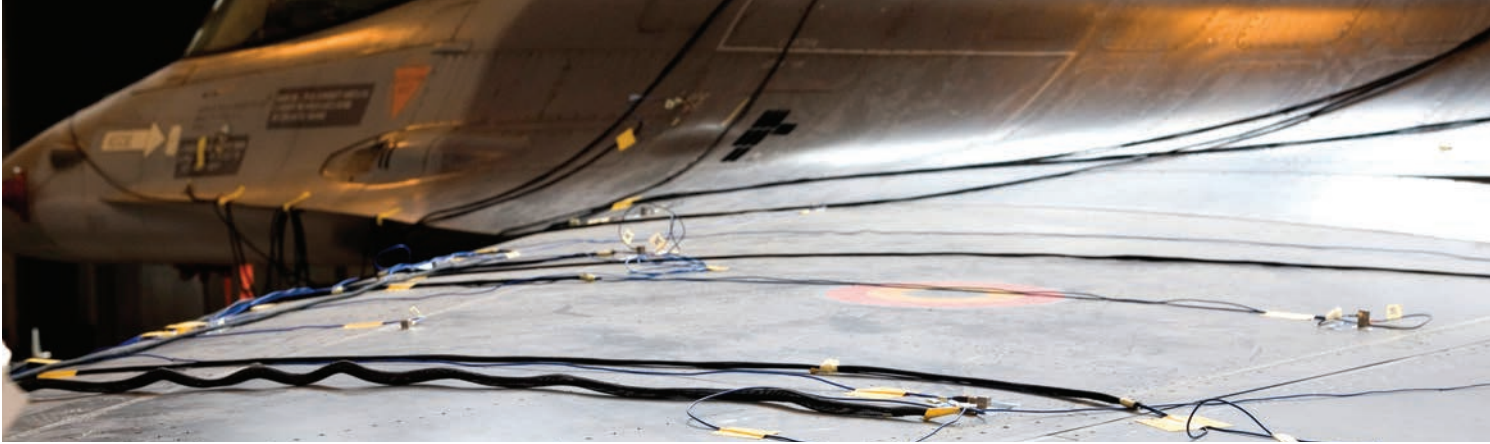
10-ft (3-m) cable

Mini 8-36 4-pin connector

Titanium housing

MODELS HT356B21 & HT356B21/NC

Same as 356B21 with +325 °F  
(163 °C) operating temperature



# STRUCTURAL TEST PRODUCTS



## MODAL ARRAY ICP® ACCELEROMETER

MODEL 333B30

- 100 mV/g (10.2 mV/(m/s<sup>2</sup>)), 0.5 to 3 kHz
- 10-32 side connector
- Ceramic shear
- 5-40 stud mount



## MODAL ARRAY ICP® ACCELEROMETER

MODEL 333B40

- (±10%) 500 mV/g (51.0 mV/(m/s<sup>2</sup>)), 0.5 to 3 kHz
- 10-32 side connector
- Ceramic shear
- 5-40 stud mount



## MODAL ARRAY ICP® ACCELEROMETER

MODEL 333B50

- 1000 mV/g (10.2 mV/(m/s<sup>2</sup>)), 0.5 to 3 kHz
- 10-32 side connector
- Ceramic shear
- 5-40 stud mount



## MODALLY TUNED® ICP® IMPACT HAMMER

MODEL 086C03

- 10 mV/lbf (2.2 mV/N)
- 0 to 500 lbf pk
- Variety of impact tips & extender mass included





## MEMS DC RESPONSE ACCELEROMETERS

MODEL 3711F1110G

135 mV/g (13.8 mV/(m/s<sup>2</sup>)),  
0 to 1000 Hz

4-pin connector

±10 g range

Titanium housing

MODEL 3711F1130G

45 mV/g(4.59 mV/(m/s<sup>2</sup>)),  
0 to 1500 Hz

4-pin connector

±30 g range

Titanium housing

MODEL 3711F1150G

27 mV/g(2.8 mV/(m/s<sup>2</sup>)),  
0 to 1500 Hz

4-pin connector

±50 g range

Titanium housing



## MEMS DC RESPONSE TRIAXIAL ACCELEROMETERS

MODEL 3713F1110G

135 mV/g(13.8 mV/(m/s<sup>2</sup>)),  
0 to 1000 Hz

9-pin connector

±10 g range

Titanium housing

MODEL 3713F1130G

45 mV/g(4.59 mV/(m/s<sup>2</sup>)),  
0 to 1500 Hz

9-pin connector

±30 g range

Titanium housing

MODEL 3713F1150G

27 mV/g(2.8 mV/(m/s<sup>2</sup>)),  
0 to 1500 Hz

9-pin connector

±50 g range

Titanium housing



## GENERAL PURPOSE ICP® FORCE SENSORS



MODEL 208C01

500 mV/lb (112410 mV/kN)  
 10 lb (0.04448 kN) compression  
 10 lb (0.04448 kN) tension

MODEL 208C02

50 mV/lb (11241 mV/kN)  
 100 lb (0.4448 kN) compression  
 100 lb (0.4448 kN) tension

MODEL 208C03

10 mV/lb (2248 mV/kN)  
 500 lb (2.224 kN) compression  
 500 lb (2.224 kN) tension

MODEL 208C04

5 mV/lb (1124 mV/kN)  
 1k lb (4.448 kN) compression  
 500 lb (2.224 kN) tension

MODEL 208C05

1 mV/lb (224.82 mV/kN)  
 5k lb (22.24 kN) compression  
 500 lb (2.224 kN) tension

## HIGH FREQUENCY ICP® PRESSURE SENSORS WITH ACCELERATION COMPENSATION



MODEL 113B21

25 mV/psi (3.6 mV/kPa)  
 Resonant frequency  $\geq$  500 kHz  
 200 psi (1379 kPa) range

MODEL 113B22

1 mV/psi (0.145 mV/kPa)  
 Resonant frequency  $\geq$  500 kHz  
 5000 psi (34475 kPa) range

MODEL 113B24

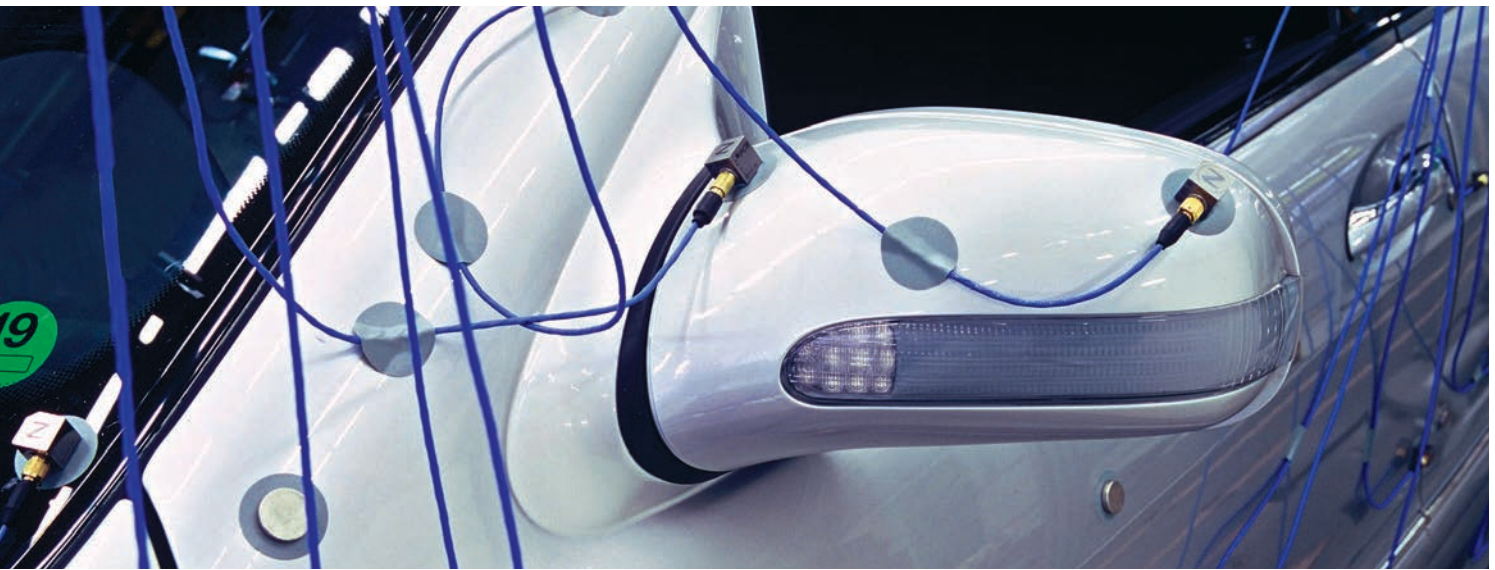
5 mV/psi (0.725 mV/kPa)  
 Resonant frequency  $\geq$  500 kHz  
 1000 psi (6895 kPa) range

MODEL 113B26

10 mV/psi (1.45 mV/kPa)  
 Resonant frequency  $\geq$  500 kHz  
 500 psi (3450 kPa) range

MODEL 113B28

100 mV/psi (14.5 mV/kPa)  
 Resonant frequency  $\geq$  500 kHz  
 50 psi (344.7 kPa) range



## ICP® SENSOR SIGNAL CONDITIONERS



MODEL 480C02

- 1-channel
- Battery-powered
- Unity gain
- BNC input/output connector



MODEL 482C05

- 4-channel
- Line-powered
- Unity gain
- BNC input/output connector



MODEL 482C15

- 4-channel
- Line-powered
- x1, x10, x100 gain
- BNC input/output connector

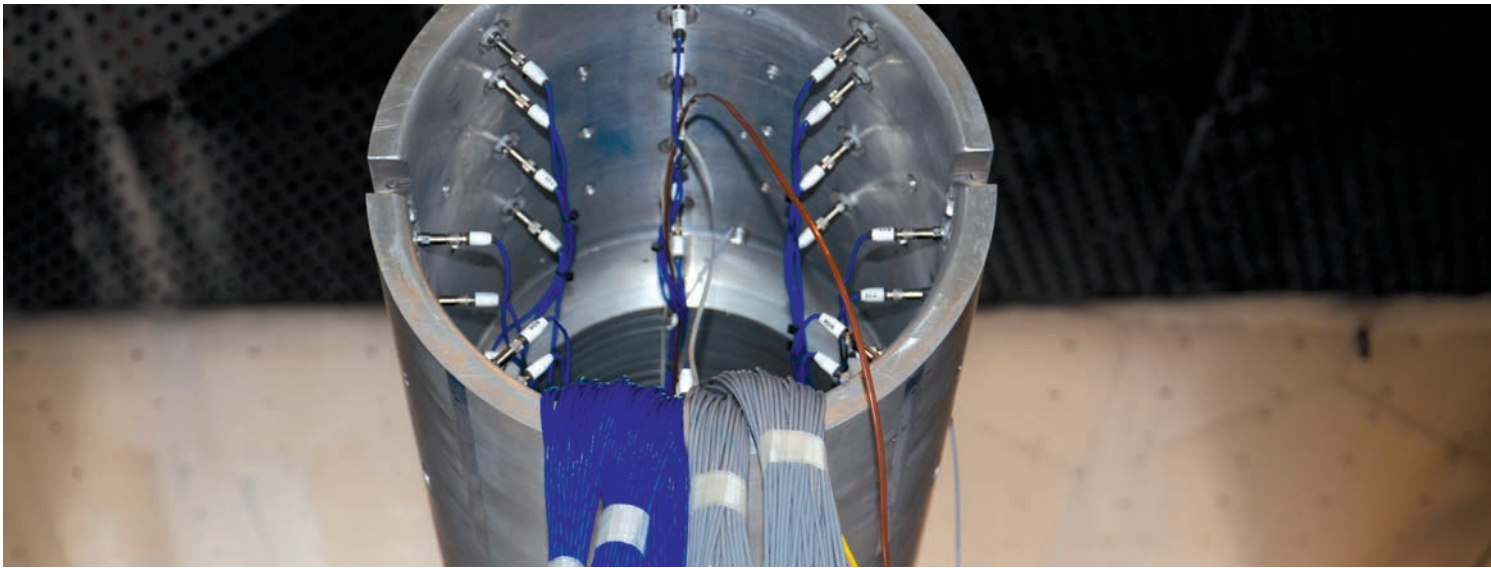


## HANDHELD SHAKER

MODEL 394C06

- 1g at 159.2 Hz (for up to 210 grams total weight of sensor, cable and mounting accessories)





# STOCK CABLES FOR TEST PRODUCTS

Stock Cables are available for immediate shipment but are not covered under Platinum Stock Sensors Lifetime Warranty

## COAXIAL CABLE ASSEMBLIES



SERIES 002C



SERIES 012A



SERIES 003A



SERIES 030A



SERIES 003C



SERIES 018C



3-56 PLUG



5-44 PLUG



10-32 PLUG

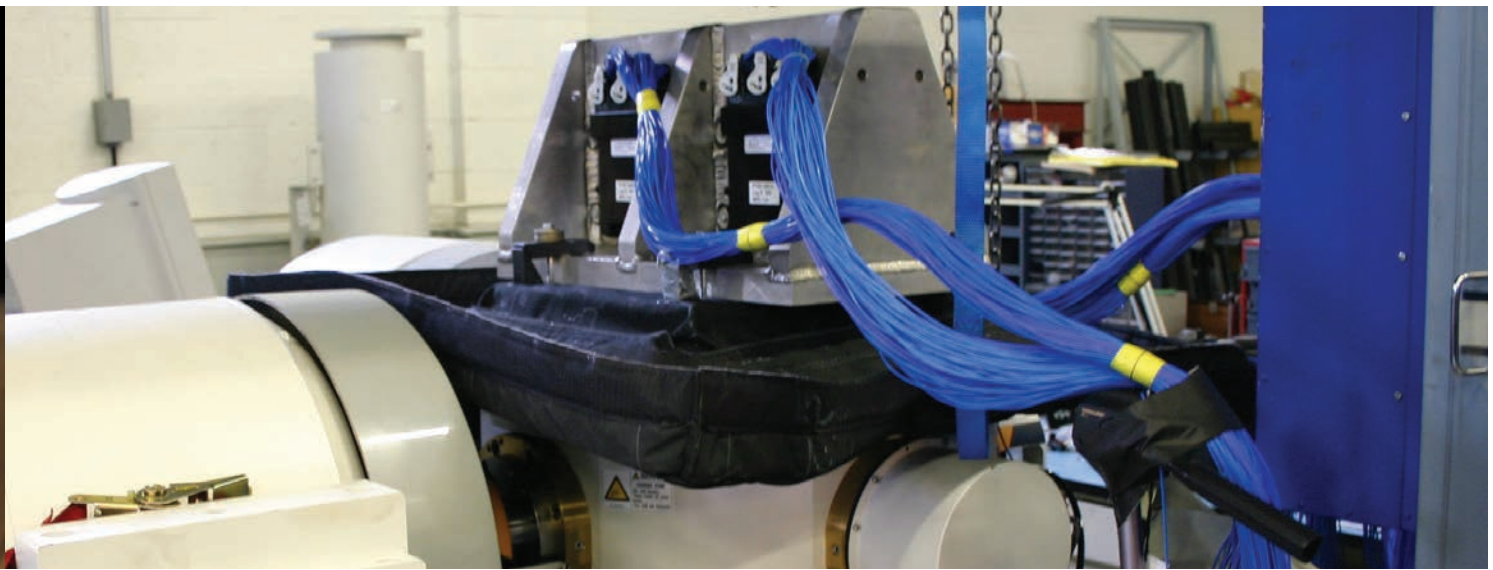


BNC PLUG

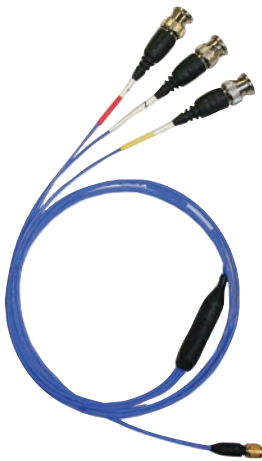
### COAXIAL CABLE ASSEMBLIES

Base Model	1 ft (0.3 m)	3 ft (0.9 m)	5 ft (1.5 m)	10 ft (3.0 m)	20 ft (6.1 m)	30 ft (9.1 m)	50 ft (15.2 m)		
<b>002C</b>	-	03	05	10	20	30	50	FEP	10-32 Plug to BNC Plug
<b>003A</b>	01	03	05	10	20	30	50	TFE, Low Noise	10-32 Plug to 10-32 Plug
<b>003C</b>	-	03	05	10	20	30	50	TFE, Low Noise	10-32 Plug to BNC Plug
<b>012A</b>	-	03	-	10	20	30	50	PVC, RG58/U	BNC Plug to BNC Plug
<b>030A</b>	-	-	05	10	20	30	-	PTFE, Low Noise, Miniature	3-56 Plug to 10-32 Plug
<b>018C</b>	-	-	05	10	20	-	-	PVC, Miniature	5-44 Plug to BNC Plug

Build a cable assembly model number by combining base model with desired length, e.g. 002C10.



## 4-CONDUCTOR CABLE ASSEMBLIES



SERIES 010G



4-SOCKET PLUG



SERIES 034K



MINI 4-SOCKET PLUG



SERIES 010P



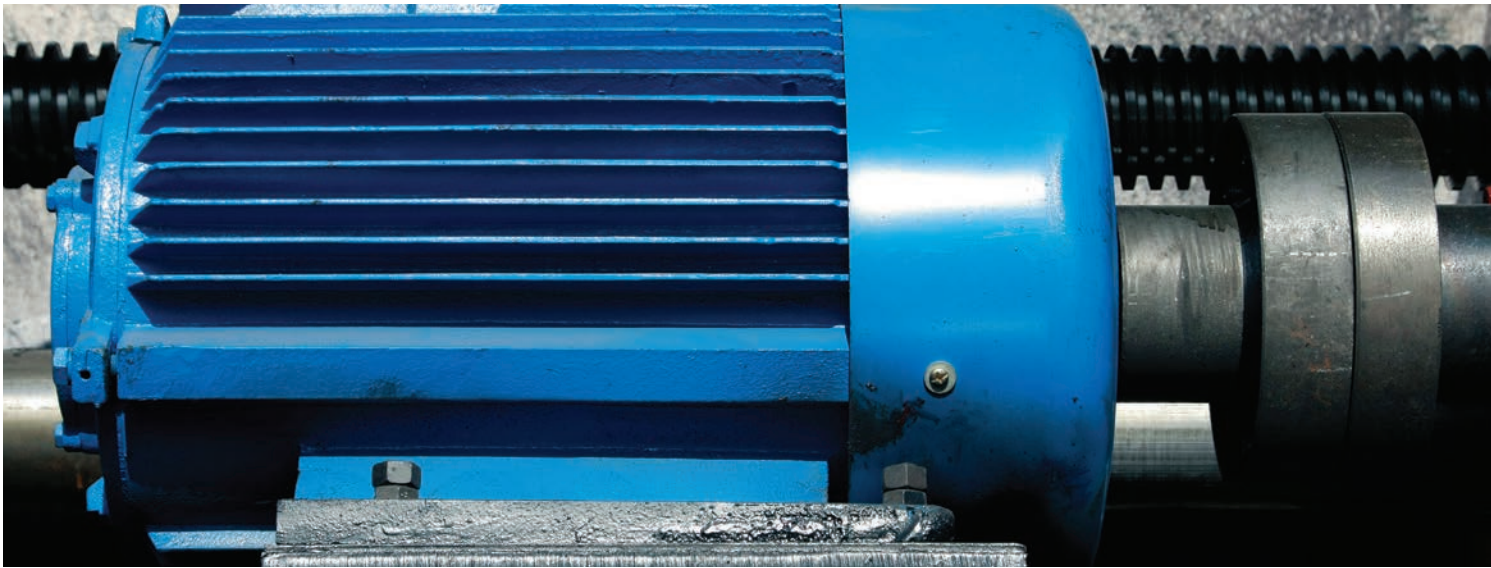
BNC PLUG

### 4-CONDUCTOR CABLE ASSEMBLIES

Base Model									Material	Connector Configuration
	5 ft (1.5 m)	10 ft (3.0 m)	15 ft (4.6 m)	20 ft (6.1 m)	25 ft (7.6 m)	30 ft (9.1 m)	50 ft (15.2 m)			
010G	05	10	15	20	25	30	50	FEP, General Purpose	4-Socket Plug to (3) BNC Plugs	
078G	-	10	-	20	-	30	-	Polyurethane, Flexible, Rugged	4-Socket Plug to (3) BNC Plugs	
034G	05	10	15	20	-	30	50	FEP, Lightweight	4-Socket Plug to (3) BNC Plugs	
034K	-	10	-	20	-	30	50	FEP, Lightweight	Mini 4-Socket Plug to (3) BNC Plugs	
010P	-	10	-	20	-	30	-	FEP, General Purpose	4-Socket Plug to Pigtails (for Series 3711)	

Build a cable assembly model by combining base model number with desired length, e.g. 034G20.





**LOW COST INDUSTRIAL ICP® ACCELEROMETERS (100 mV/g SENSITIVITY UNLESS OTHERWISE NOTATED)**



MODELS 603C01, M603C01

- IMI's most popular accelerometer
- Hermetically sealed
- Small footprint



MODELS 601A02, M601A02

- 500 mV/g
- Frequency Range: 0.17 to 10k Hz
- Top exit, 2-pin connector



MODELS 627A01, M627A01

- Frequency range: 0.3 to 10k Hz
- 2-pin MIL-C-5015 connector
- Quartz sensing element



MODELS 601A01, M601A01

- Very good signal-to-noise ratio
- Frequency Range: 0.27 to 10k Hz
- Ceramic sensing element



MODELS 604B31, M604B31

- Triaxial accelerometer
- Through-bolt aids in cable orientation
- Ceramic sensing element



MODELS 602D01, M602D01

- Easy installation in tight spaces
- Through-bolt aids cable orientation
- Low profile, less than 1 in. height



MODELS HT602D01, HTM602D01

- Ceramic sensing element
- Low profile design
- Through-bolt mount



MODELS 607A01, M607A01

- Patented 360° swivel mount design
- Frequency range: 0.5 to 10k Hz



MODELS 607A11, M607A11

- Ideal for submersible applications
- Patented 360° swivel mount design
- Frequency range: 0.5 to 10k Hz
- Available cable lengths:
  - 10 ft. (Model 607A11)
  - 20 ft. (Model 607A11/020BZ)
  - 30 ft. (Model 607A11/030BZ)
  - 50 ft. (Model 607A11/050BZ)



MODELS 608A11, M608A11

- Ideal for submersible applications
- Small installation footprint
- Frequency range: 0.5 to 10k Hz
- Available cable lengths:
  - 10 ft. (Model 608A11)
  - 20 ft. (Model 608A11/020BZ)
  - 30 ft. (Model 608A11/030BZ)
  - 50 ft. (Model 608A11/050BZ)



## PRECISION ICP® ACCELEROMETERS (100 mV/g SENSITIVITY UNLESS OTHERWISE NOTATED)

Industrial accelerometers for route-based condition monitoring and predictive maintenance.



MODELS 622B01, M622B01

- Full frequency sweep calibration
- 15k Hz high frequency response
- Ideal for early detection of bearing defects



MODELS 628F01, M628F01

- Quartz sensing element
- Frequency range: 0.3 to 12k Hz
- Low temperature coefficient



MODELS 625B01, M625B01

- Ceramic sensing element
- Low profile design
- Through-bolt mount





## 4-20 mA OUTPUT VIBRATION TRANSMITTER

Looking for an overall vibration measurement on your most critical machinery? Our line of 4-20 mA vibration transmitters will interface directly to your PLC, DCS or SCADA control system. Scaled in inches per second velocity or g's acceleration, these sensors provide 24/7 online protection for key plant machines, reducing downtime.

### SERIES 640B0X

- Monitors and protects 24/7
- Avoids costly catastrophic failures
- Interfaces with plant monitoring & PI systems

### MODEL 640B00

- Output: 0 – 0.5 ips peak
- Frequency range: 3 to 1000 Hz

### MODEL 640B00

- Output: 0 – 0.5 ips peak
- Frequency range: 3 to 1000 Hz

### MODEL 640B01

- Output: 0 – 1.0 ips peak
- Frequency range: 3 to 1000 Hz

### MODEL 640B01

- Output: 0 – 1.0 ips peak
- Frequency range: 3 to 1000 Hz

## BEARING FAULT DETECTOR



### MODELS 682C03, 682C05

- Output: Two 4-20 mA signals (one scaled for RMS overall vibration, one scaled for true peak vibration) plus raw vibration signal
- Measurement range:  $\pm 50$  g

## BNC TERMINATION BOXES

BNC termination enclosures offer a simple, economical and safe method for accessing up to 12 sensors that are installed in remote locations.



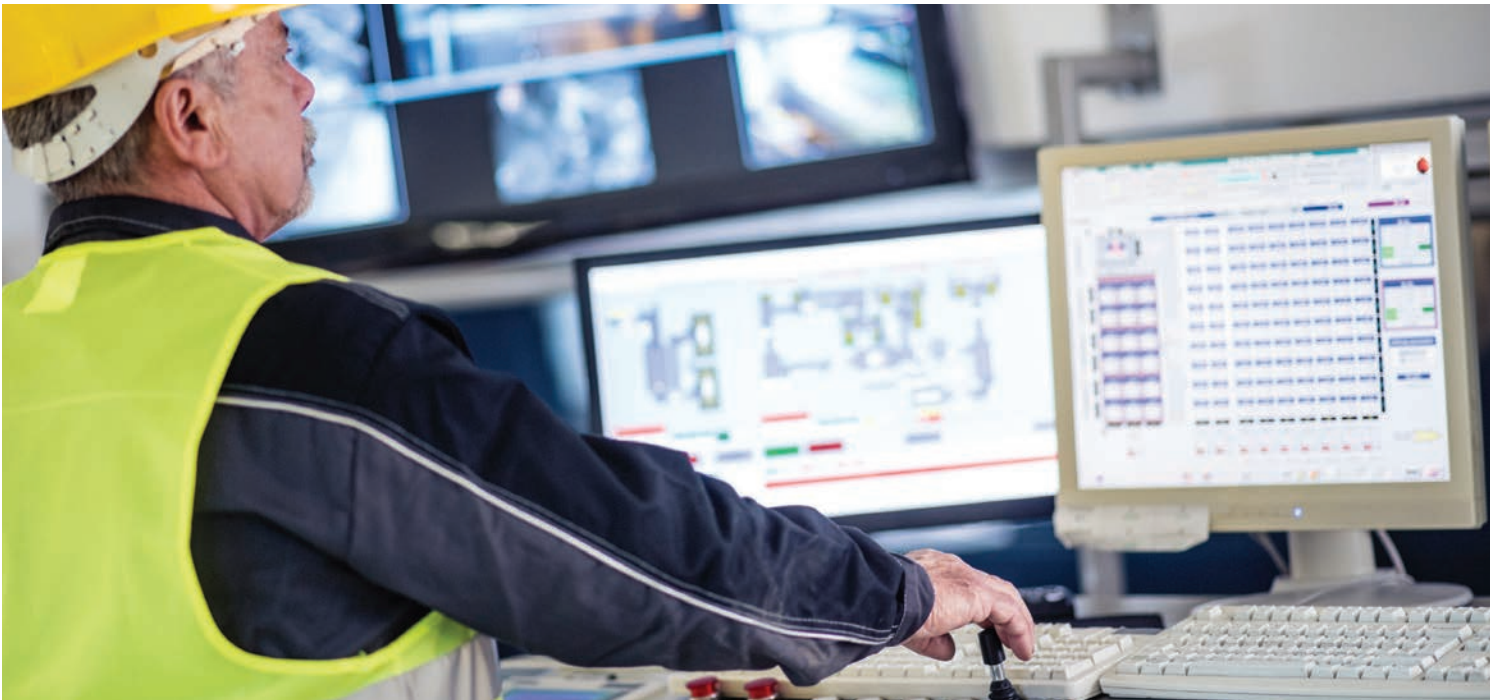
### MODEL 691A51/02

- 2 output channels via BNC



### MODEL 691A51/04

- 4 output channels via BNC



## STOCK CABLES FOR INDUSTRIAL PRODUCTS

Industrial Stock Cables are available for immediate shipment but are not covered under Platinum Stock Sensors Lifetime Warranty.

\*\*Stock cables are available in 10, 20 & 30 foot (3, 6, 9 meter) lengths.



### POLYURETHANE CABLE ASSEMBLY

MODEL 058BRBZ

- 2-conductor polyurethane cable, with 2-socket MIL to blunt cut



### POLYURETHANE CABLE ASSEMBLY

MODEL 058BQBZ

- 2-conductor polyurethane cable, with right-angle 2-socket MIL to blunt cut

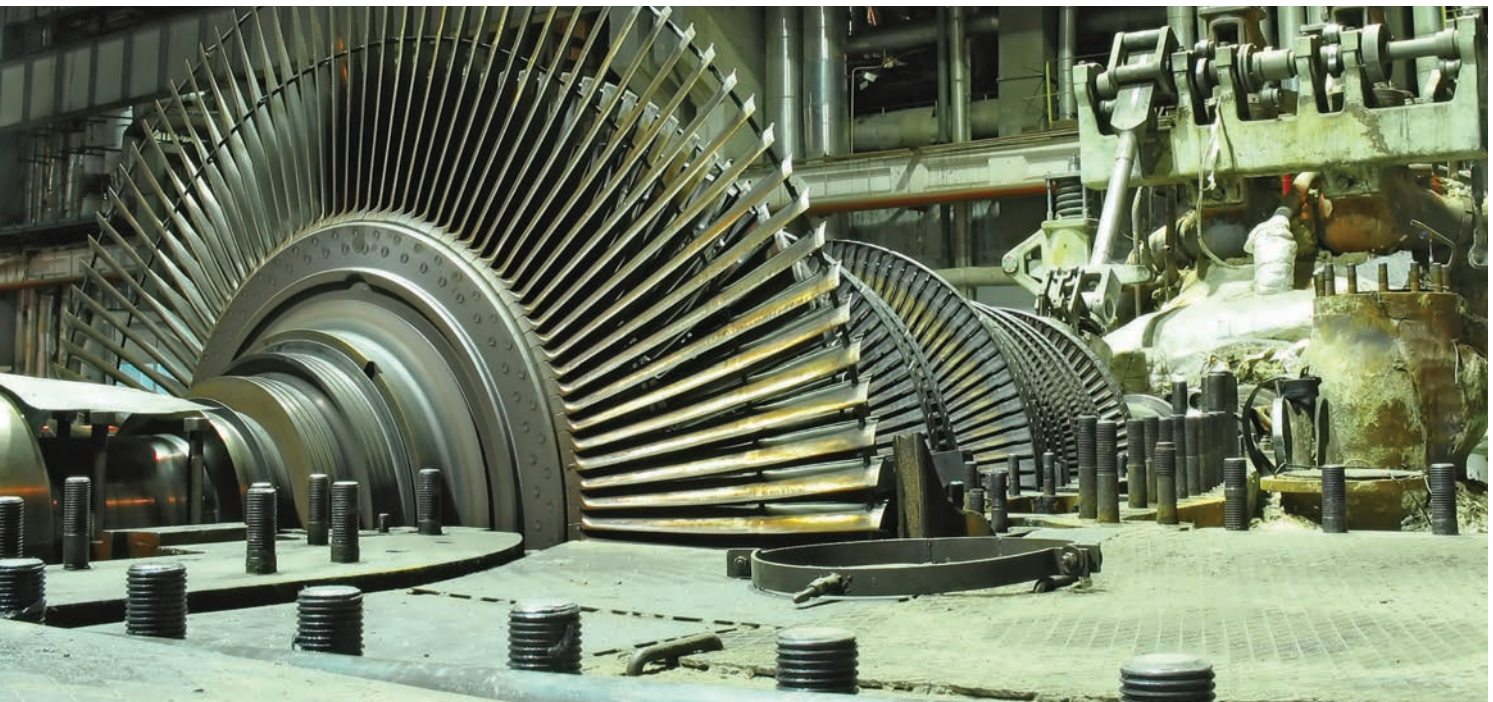


### POLYURETHANE CABLE ASSEMBLY

MODEL 052AEBZ

- 2-conductor polyurethane cable, with 2-socket MIL environmental boot to blunt cut





### PTFE CABLE ASSEMBLY

MODEL 053AEBZ

- 2-conductor PTFE cable, with 2-socket MIL environmental boot to blunt cut



### SAFETY BREAKAWAY CABLE ASSEMBLY

MODEL 050LQ006LU

- 6 ft coiled 2-conductor polyurethane cable, with 2-socket MIL to 3-pin half breakaway connector



### SAFETY BREAKAWAY CABLE ASSEMBLY

MODEL 052LV001AC

- 1 ft 2-conductor polyurethane cable, with 3-socket half breakaway connector to BNC plug



 **PCB PIEZOTRONICS**  
AN AMPHENOL COMPANY

3425 Walden Avenue, Depew, NY 14043 USA

pcb.com | info@pcb.com | 800 828 8840 | +1 716 684 0001

© 2021 PCB Piezotronics - all rights reserved. PCB Piezotronics is a wholly-owned subsidiary of Amphenol Corporation. Endevo is an assumed name of PCB Piezotronics of North Carolina, Inc., which is a wholly-owned subsidiary of PCB Piezotronics, Inc. Accumetrics, Inc. and The Modal Shop, Inc. are wholly-owned subsidiaries of PCB Piezotronics, Inc. IMI Sensors and Larson Davis are Divisions of PCB Piezotronics, Inc. Except for any third party marks for which attribution is provided herein, the company names and product names used in this document may be the registered trademarks or unregistered trademarks of PCB Piezotronics, Inc., PCB Piezotronics of North Carolina, Inc. (d/b/a Endevo), The Modal Shop, Inc. or Accumetrics, Inc. Detailed trademark ownership information is available at [www.pcb.com/trademarkownership](http://www.pcb.com/trademarkownership).

TM-Platinum-INTL-0422