



PLATINUM STOCK SENSORS



SAME DAY SHIPPING – LIFETIME WARRANTY

PLATINUM STOCK SENSORS

OVER 10,000 SENSORS IN STOCK, READY TO SHIP!

At PCB®, we don't just know the sensor business; we pioneered ICP® technology. For over 50 years, every sensor design and assembly is subjected to tight in-house inspection and quality control. That's why we have impeccable product performance and longevity, the expectation our customers have for every PCB sensor.

Platinum Stock Sensors program is one of the ways we live up to our Total Customer Satisfaction guarantee. Driven by customer demand, these sensors are the best fit for typical R&D, product testing, and industrial monitoring applications. Platinum Stock Sensors ship fast and are backed by a lifetime warranty - if you are not 100% satisfied, simply send them back. We'll repair or replace them, guaranteed. No questions asked!

VOLUME DISCOUNTS

5% Discount: 10-24 Units **10% Discount: 25-99 Units** **15% Discount: 100+ Units**

*For U.S. customers, orders up to 10 units placed before 4 p.m. EST ship the same day. IF NOT, YOUR SHIPPING IS FREE. For orders outside the U.S., please contact your local representative. Volume discounts are available in the U.S. only.

GENERAL PURPOSE ICP® ACCELEROMETERS

MODEL 352C03



- 10 mV/g (1.02 mV/ (m/s²)), 0.5 to 10 kHz
- 10-32 side connector
- Ceramic shear

MODEL 353B03



- 10 mV/g (1.02 mV/ (m/s²)), 1 to 7 kHz
- 10-32 side connector
- Quartz shear

MODEL 352C04



- 10 mV/g (1.02 mV/ (m/s²)), 0.5 to 10 kHz
- 10-32 top connector
- Ceramic shear

MODEL 353B04



- 10 mV/g (1.02 mV/ (m/s²)), 1 to 7 kHz
- 10-32 top connector
- Quartz shear

HIGH SENSITIVITY ICP® ACCELEROMETERS

MODEL 352C33



- 100 mV/g (10.2 mV/ (m/s²)), 0.5 to 10 kHz
- 10-32 side connector
- Ceramic shear

MODEL 353B33



- 100 mV/g (10.2 mV/ (m/s²)), 1 to 4 kHz
- 10-32 side connector
- Quartz shear

MODEL 352C34



- 100 mV/g (10.2 mV/ (m/s²)), 0.5 to 10 kHz
- 10-32 top connector
- Ceramic shear

MODEL 353B34



- 100 mV/g (10.2 mV/ (m/s²)), 1 to 4 kHz
- 10-32 top connector
- Quartz shear

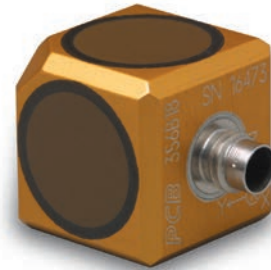


HIGH SENSITIVITY ICP® TRIAXIAL ACCELEROMETERS



MODEL 356A15

- 100 mV/g (10.2 mV/(m/s²)), 2 to 5 kHz
- 1/4-28 4-pin connector
- Ceramic shear
- Titanium housing



MODEL 356B18

- 1000 mV/g (102 mV/(m/s²)), 0.5 to 3 kHz
- 1/4-28 4-pin connector
- Ceramic shear
- Aluminum housing



MODEL 356A16

- 100 mV/g (10.2 mV/(m/s²)), 0.5 to 5 kHz
- 1/4-28 4-pin connector
- Ceramic shear
- Aluminum housing



MODEL 356A17

- 500 mV/g (51 mV/(m/s²)), 0.5 to 3 kHz
- 1/4-28 4-pin connector
- Ceramic shear
- Aluminum housing

500°F
(260 °C)



HIGH TEMPERATURE CHARGE OUTPUT ACCELEROMETER

MODEL 357B03

- 10 pC/g (1.02 pC/(m/s²)), 9 kHz
- 10-32 side connector
- Ceramic shear
- -95 °F to +500 °F (-71 °C to + 260 °C)



GENERAL PURPOSE ICP® TRIAXIAL ACCELEROMETERS

MODEL 356A02

MODEL 356A25

- 10 mV/g (1.02 mV/(m/s²)), 1 to 5 kHz
 - 1/4-28 4-pin connector
 - Ceramic shear
 - Titanium housing
- 25 mV/g (2.6 mV/(m/s²)), 1 to 5 kHz
 - 1/4-28 4-pin connector
 - Ceramic shear
 - Titanium housing



MINIATURE ICP® TRIAXIAL ACCELEROMETERS WITH TEDS

MODEL 356A43

MODEL 356A44

- 10 mV/g (1.02 mV/(m/s²)),
0.7 Hz to 7 kHz
 - 1/4-28 4-pin connector
 - Titanium housing
 - 0.4 in (10.2 mm) cube
- 50 mV/g (5.1 mV/(m/s²)),
0.7 Hz to 7 kHz
 - 1/4-28 4-pin connector
 - Titanium housing
 - 0.4 in (10.2 mm) cube

MODEL 356A45

- 100 mV/g (10.2 mV/(m/s²)),
0.7 Hz to 7 kHz
- 1/4-28 4-pin connector
- Titanium housing
- 0.4 in (10.2 mm) cube

MINIATURE ICP® ACCELEROMETERS



MODELS 352C23 & 352C23/NC

- 5 mV/g (0.5 mV/(m/s²)), 2 to 10 kHz (0.2 gm)
- 3-56 side connector
- Ceramic shear
- Aluminum housing



MODEL 352A73

- 5 mV/g (0.5 mV/(m/s²)), 2 to 10 kHz (0.3 gm)
- 10-ft (3 mm) Integral cable
- Ceramic shear
- Titanium housing



MODELS 352A21 & 352A21/NC

- 10 mV/g (1.0 mV/(m/s²)), 1 to 10 kHz (0.6 gm)
- 10-ft (3-m) cable
- 3-56 side connector
- Ceramic shear
- Titanium housing



MODELS 352C22 & 352C22/NC

- 10 mV/g (1.0 mV/(m/s²)), 1 to 10 kHz (0.5 gm)
- 10-ft (3-m) cable
- 3-56 side connector
- Ceramic shear
- Aluminum housing



MODELS 352A24 & 352A24/NC

- 100 mV/g (10.2 mV/(m/s²)), 1 to 8 kHz (0.8 gm)
- 10-ft (3-m) cable
- 3-56 side connector
- Ceramic shear
- Aluminum housing



MODELS 353B15 & M353B15
(5-40 UNF) & (M3 X 0.5)

- 10 mV/g (1.0 mV/(m/s²)), 1 to 10 kHz (2 gm)
- 5-44 side connector
- Quartz shear
- Titanium housing



MODELS 352C65 & M352C65
(5-40 UNF) & (M3 X 0.5)

- 100 mV/g (10.2 mV/(m/s²)), 0.5 to 10 kHz (2 gm)
- 5-44 side connector
- Ceramic shear
- Titanium housing



MODELS 353B17 & M353B17
(5-40 UNF) & (M3 X 0.5)

- 10 mV/g (1.0 mV/(m/s²)), 1 to 10 kHz (1.7 gm)
- 10-ft integral cable
- Quartz shear
- Titanium housing



MODELS 353B18, M353B18 & 352C68
(5-40 UNF), (M3 X 0.5) & (5-40 UNF)

- 10 mV/g (1.0 mV/(m/s²)), 1 to 10 kHz (1.8 gm) - 353B18 & M353B18
- 100 mV/g (10.2 mV/(m/s²)), 0.5 to 10 kHz (2.0 gm) - 352C68
- 10-32 top connector
- Quartz shear - 353B18 & M353B18
- Ceramic shear - 352C68
- Titanium housing

*/NC Models do not include an extension cable.

MINIATURE ICP® TRIAXIAL ACCELEROMETERS



MODELS 356A01 & 356A01/NC

- 5 mV/g (0.51 mV/(m/s²)), 2 to 5 kHz (1.0 gm)
- 5-ft (1.5-m) integral cable plus 5-ft (1.5 m) extension cable w/BNC plug termination
- Ceramic shear
- +250 °F (121 °C) operating temperature
- 0.25 in (6.35 mm) cube, titanium housing



MODELS 356A03 & 356A03/NC

- 10 mV/g (1.02 mV/(m/s²)), 2 to 5 kHz (1.0 gm)
- 5-ft (1.5-m) integral cable plus 5-ft (1.5 m) extension cable w/BNC plug termination
- Ceramic shear
- +250 °F (121 °C) operating temperature
- 0.25 in (6.35 mm) cube, titanium housing



MODELS HT356B01 & HT356B01/NC

- Same as 356A01 with +356 °F (180 °C) operating temperature



MODELS 356B21 & 356B21/NC

- 10 mV/g (1.02 mV/(m/s²)), 2 to 7 kHz (4 gm)
- 10-ft (3-m) cable
- Mini 8-36 4-pin connector
- +250 °F (121 °C) operating temperature
- Titanium housing
- Aluminum housing



MODEL 356A33

- 10 mV/g (1.02 mV/(m/s²)), 2 to 7 kHz (5.3 gm)
- 1/4-28 4-pin connector
- Ceramic shear
- Titanium housing

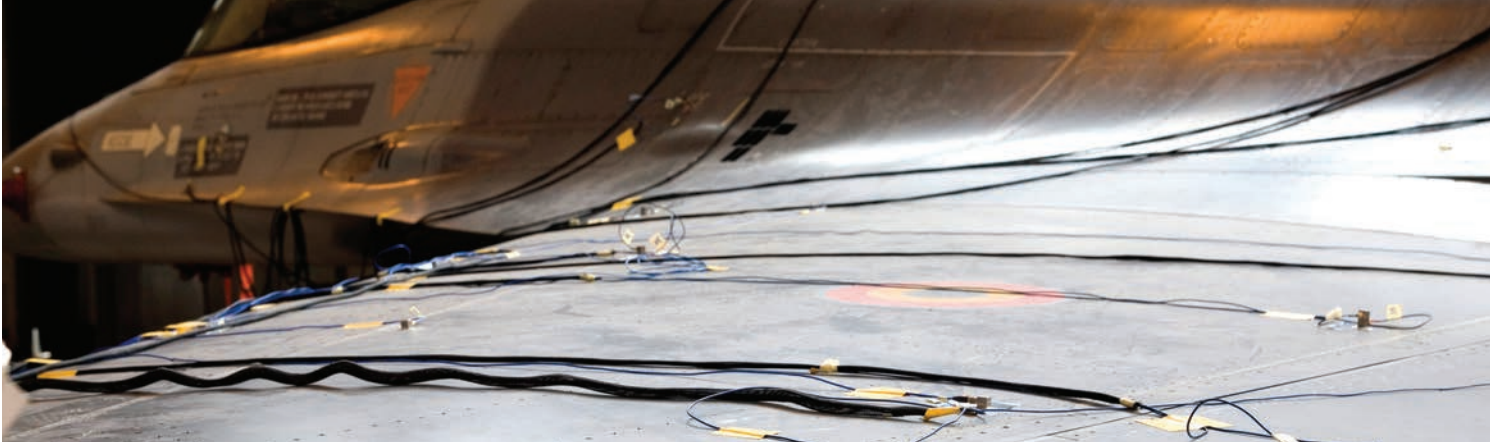


MODELS 356A32 & 356A32/NC

- 100 mV/g (10.2 mV/(m/s²)), 1 to 4 kHz (5.4 gm)
- 10-ft (3-m) cable
- Mini 8-36 4-pin connector
- Titanium housing

MODELS HT356B21 & HT356B21/NC

- Same as 356B21 with +325 °F (163 °C) operating temperature



STRUCTURAL TEST PRODUCTS



MODAL ARRAY ICP® ACCELEROMETER
MODEL 333B30

- 100 mV/g (10.2 mV/(m/s²)), 0.5 to 3 kHz
- 10-32 side connector
- Ceramic shear
- 5-40 stud mount



MODAL ARRAY ICP® ACCELEROMETER
MODEL 333B40

- (±10%) 500 mV/g (51.0 mV/(m/s²)), 0.5 to 3 kHz
- 10-32 side connector
- Ceramic shear
- 5-40 stud mount



MODAL ARRAY ICP® ACCELEROMETER
MODEL 333B50

- 1000 mV/g (10.2 mV/(m/s²)), 0.5 to 3 kHz
- 10-32 side connector
- Ceramic shear
- 5-40 stud mount



MODALLY TUNED® ICP® IMPACT HAMMER
MODEL 086C03

- 10 mV/lbf (2.2 mV/N)
- 0 to 500 lbf pk
- Variety of impact tips & extender mass included



MEMS DC RESPONSE ACCELEROMETERS

MODEL 3711F1110G

- 135 mV/g (13.8 mV/(m/s²)), 0 to 1000 Hz
- 4-pin connector
- ±10 g range
- Titanium housing

MODEL 3711F1130G

- 45 mV/g(4.59 mV/(m/s²)), 0 to 1500 Hz
- 4-pin connector
- ±30 g range
- Titanium housing

MODEL 3711F1150G

- 27 mV/g(2.8 mV/(m/s²)), 0 to 1500 Hz
- 4-pin connector
- ±50 g range
- Titanium housing



MEMS DC RESPONSE TRIAXIAL ACCELEROMETERS

MODEL 3713F1110G

- 135 mV/g(13.8 mV/(m/s²)), 0 to 1000 Hz
- 9-pin connector
- ±10 g range
- Titanium housing

MODEL 3713F1130G

- 45 mV/g(4.59 mV/(m/s²)), 0 to 1500 Hz
- 9-pin connector
- ±30 g range
- Titanium housing

MODEL 3713F1150G

- 27 mV/g(2.8 mV/(m/s²)), 0 to 1500 Hz
- 9-pin connector
- ±50 g range
- Titanium housing



GENERAL PURPOSE ICP® FORCE SENSORS



MODEL 208C03

- 10 mV/lb (2248 mV/kN)
- 500 lb (2.224 kN) compression
- 500 lb (2.224 kN) tension

MODEL 208C01

- 500 mV/lb (112410 mV/kN)
- 10 lb (0.04448 kN) compression
- 10 lb (0.04448 kN) tension

MODEL 208C02

- 50 mV/lb (11241 mV/kN)
- 100 lb (0.4448 kN) compression
- 100 lb (0.4448 kN) tension

MODEL 208C04

- 5 mV/lb (1124 mV/kN)
- 1k lb (4.448 kN) compression
- 500 lb (2.224 kN) tension

MODEL 208C05

- 1 mV/lb (224.82 mV/kN)
- 5k lb (22.24 kN) compression
- 500 lb (2.224 kN) tension

HIGH FREQUENCY ICP® PRESSURE SENSORS WITH ACCELERATION COMPENSATION



MODEL 113B24

- 5 mV/psi (0.725 mV/kPa)
- Resonant frequency \geq 500 kHz
- 1000 psi (6895 kPa) range

MODEL 113B21

- 25 mV/psi (3.6 mV/kPa)
- Resonant frequency \geq 500 kHz
- 200 psi (1379 kPa) range

MODEL 113B22

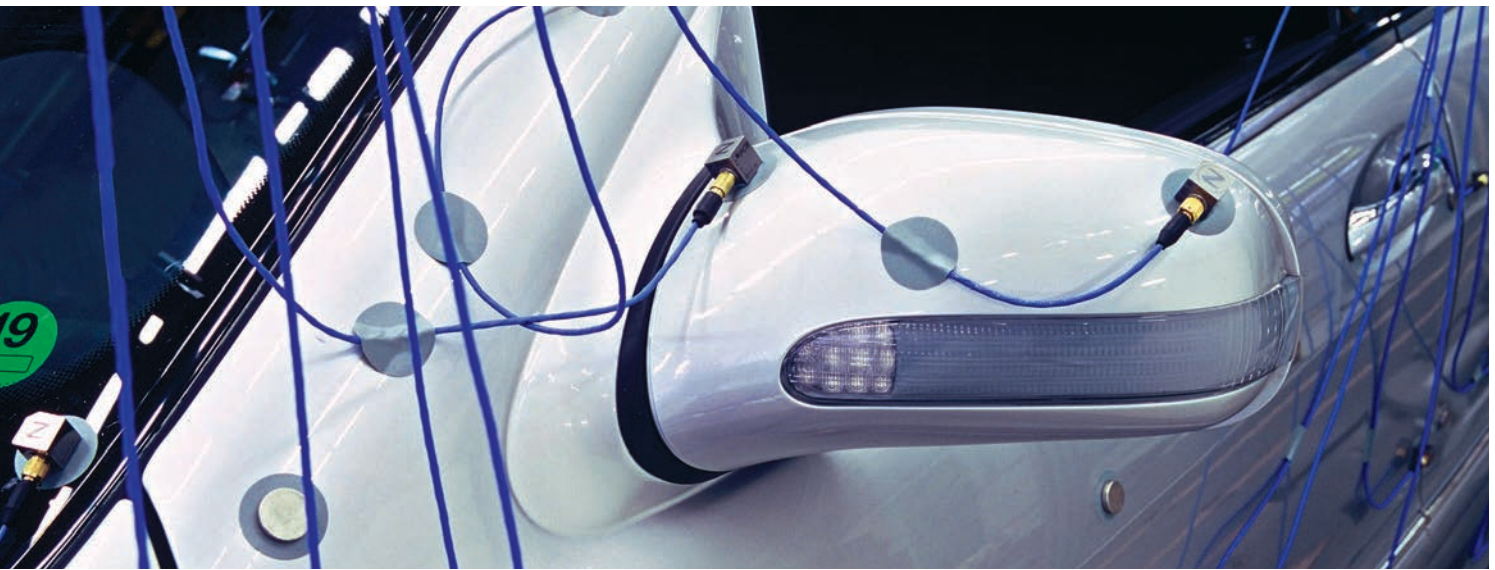
- 1 mV/psi (0.145 mV/kPa)
- Resonant frequency \geq 500 kHz
- 5000 psi (34475 kPa) range

MODEL 113B26

- 10 mV/psi (1.45 mV/kPa)
- Resonant frequency \geq 500 kHz
- 500 psi (3450 kPa) range

MODEL 113B28

- 100 mV/psi (14.5 mV/kPa)
- Resonant frequency \geq 500 kHz
- 50 psi (344.7 kPa) range



ICP® SENSOR SIGNAL CONDITIONERS



MODEL 480C02

- 1-channel
- Battery-powered
- Unity gain
- BNC input/output connector



MODEL 482C05

- 4-channel
- Line-powered
- Unity gain
- BNC input/output connector



MODEL 482C15

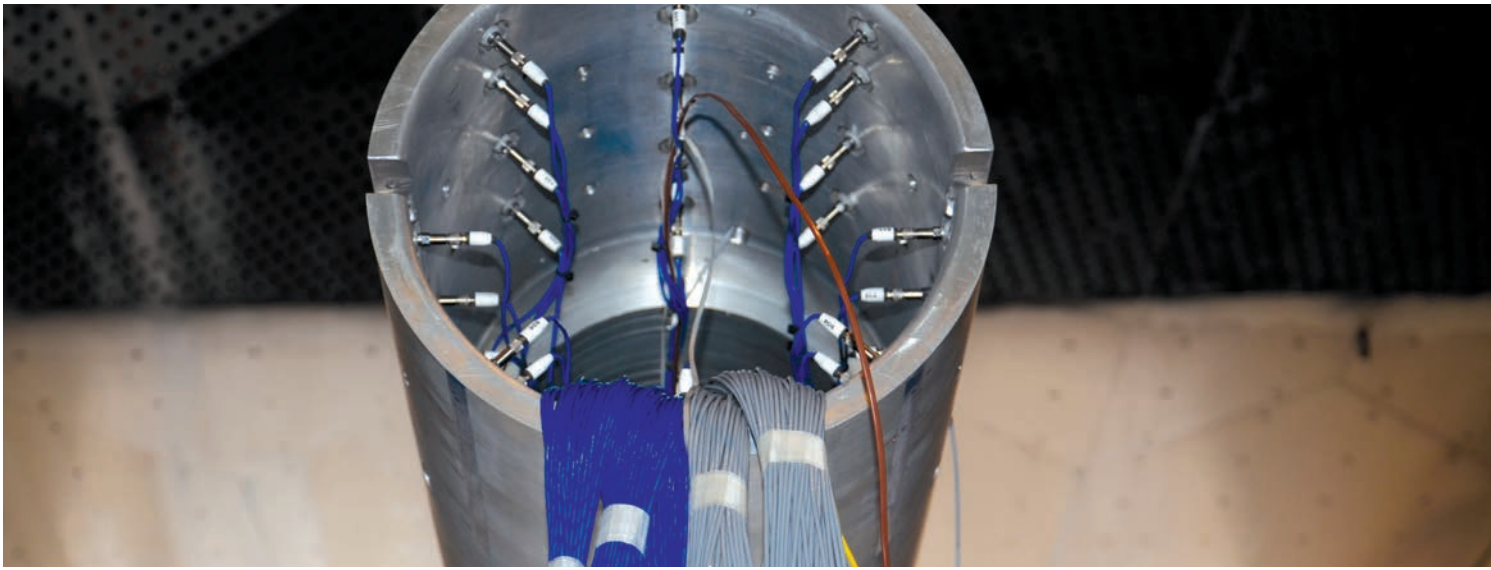
- 4-channel
- Line-powered
- x1, x10, x100 gain
- BNC input/output connector



HANDHELD SHAKER

MODEL 394C06

- 1g at 159.2 Hz (for up to 210 grams total weight of sensor, cable and mounting accessories)



STOCK CABLES FOR TEST PRODUCTS

Stock Cables are available for immediate shipment but are not covered under Platinum Stock Sensors Lifetime Warranty

COAXIAL CABLE ASSEMBLIES



SERIES 002C



SERIES 012A



SERIES 003A



SERIES 030A



SERIES 003C



SERIES 018C

COAXIAL CABLE ASSEMBLIES

Base Model	1 ft (0.3 m)	3 ft (0.9 m)	5 ft (1.5 m)	10 ft (3.0 m)	20 ft (6.1 m)	30 ft (9.1 m)	50 ft (15.2 m)		
002C	-	03	05	10	20	30	50	FEP	10-32 Plug to BNC Plug
003A	01	03	05	10	20	30	50	TFE, Low Noise	10-32 Plug to 10-32 Plug
003C	-	03	05	10	20	30	50	TFE, Low Noise	10-32 Plug to BNC Plug
012A	-	03	-	10	20	30	50	PVC, RG58/U	BNC Plug to BNC Plug
030A	-	-	05	10	20	30	-	PTFE, Low Noise, Miniature	3-56 Plug to 10-32 Plug
018C	-	-	05	10	20	-	-	PVC, Miniature	5-44 Plug to BNC Plug

Build a cable assembly model number by combining base model with desired length, e.g. 002C10.



3-56 PLUG



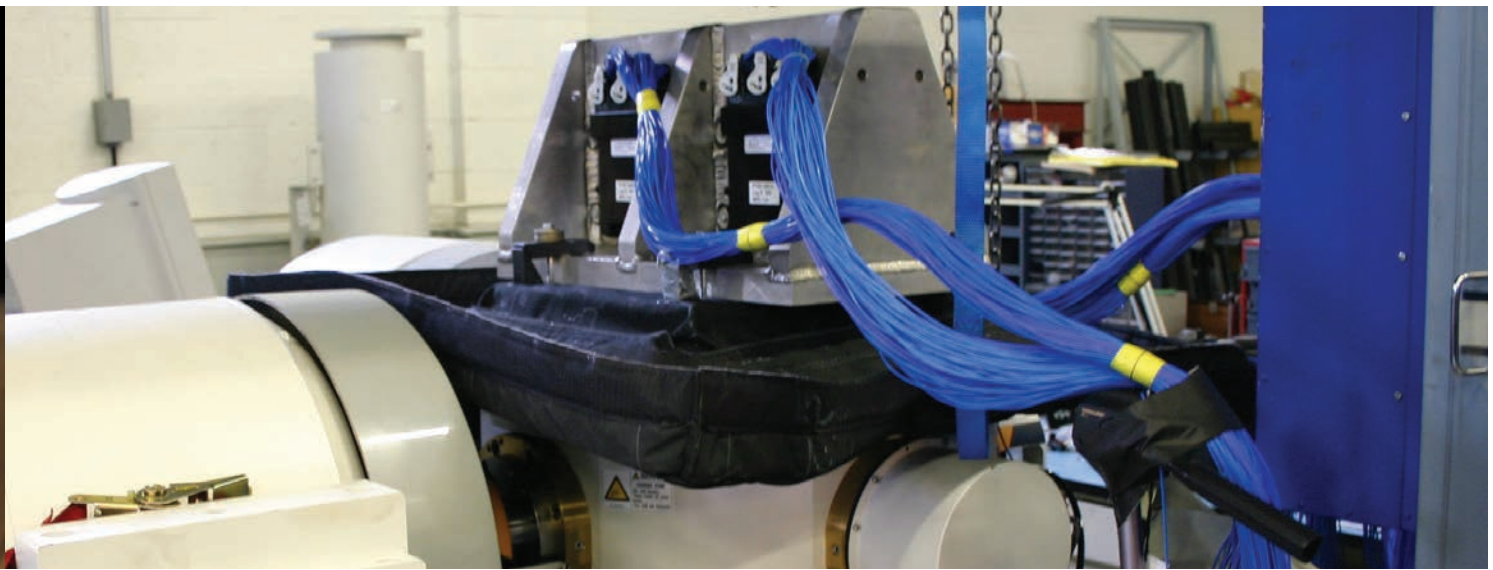
5-44 PLUG



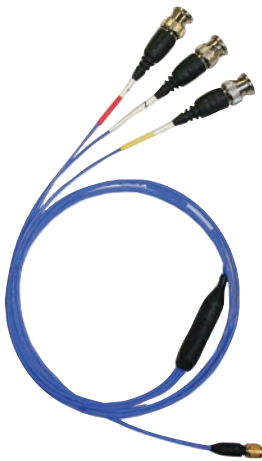
10-32 PLUG



BNC PLUG



4-CONDUCTOR CABLE ASSEMBLIES



SERIES 010G



4-SOCKET PLUG



SERIES 034K



MINI 4-SOCKET PLUG



SERIES 010P

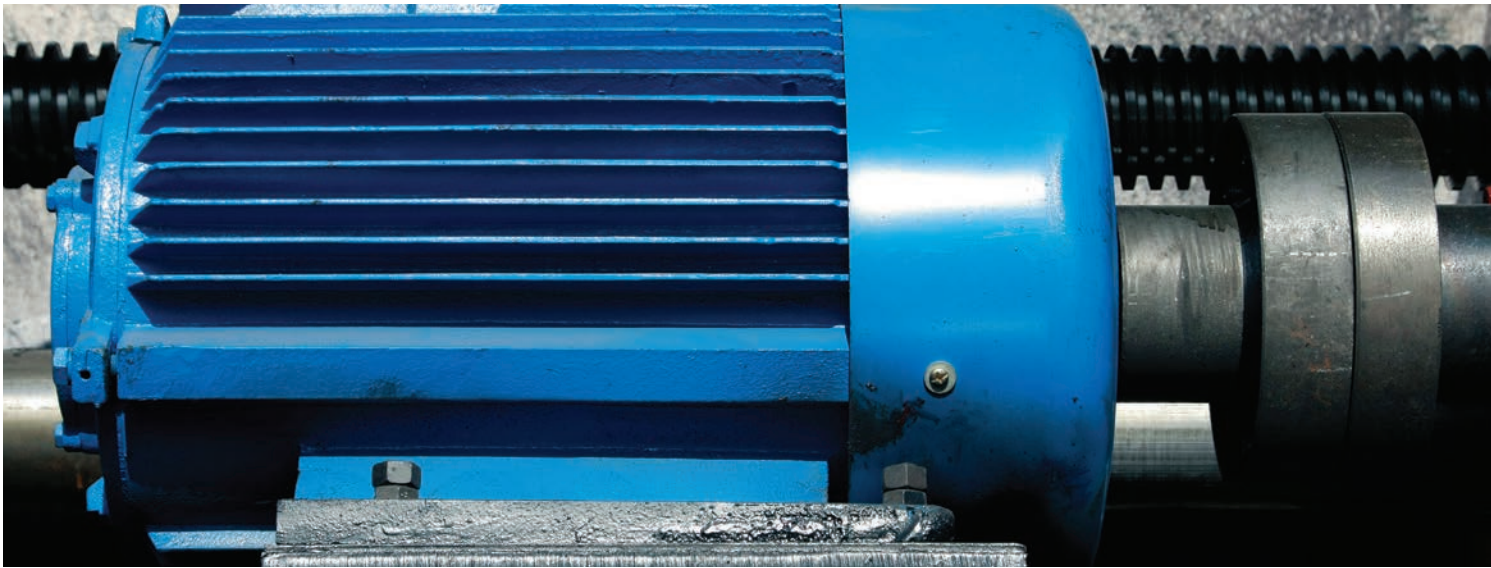


BNC PLUG

4-CONDUCTOR CABLE ASSEMBLIES

Base Model	5 ft (1.5 m)	10 ft (3.0 m)	15 ft (4.6 m)	20 ft (6.1 m)	25 ft (7.6 m)	30 ft (9.1 m)	50 ft (15.2 m)		
010G	05	10	15	20	25	30	50	FEP, General Purpose	4-Socket Plug to (3) BNC Plugs
078G	-	10	-	20	-	30	-	Polyurethane, Flexible, Rugged	4-Socket Plug to (3) BNC Plugs
034G	05	10	15	20	-	30	50	FEP, Lightweight	4-Socket Plug to (3) BNC Plugs
034K	-	10	-	20	-	30	50	FEP, Lightweight	Mini 4-Socket Plug to (3) BNC Plugs
010P	-	10	-	20	-	30	-	FEP, General Purpose	4-Socket Plug to Pigtails (for Series 3711)

Build a cable assembly model by combining base model number with desired length, e.g. 034G20.



LOW COST INDUSTRIAL ICP® ACCELEROMETERS (100 mV/g SENSITIVITY UNLESS OTHERWISE NOTATED)



MODELS 603C01, M603C01

- IMI's most popular accelerometer
- Hermetically sealed
- Small footprint



MODELS 601A02, M601A02

- 500 mV/g
- Frequency Range: 0.17 to 10k Hz
- Top exit, 2-pin connector



MODELS 627A01, M627A01

- Frequency range: 0.3 to 10k Hz
- 2-pin MIL-C-5015 connector
- Quartz sensing element



MODELS 601A01, M601A01

- Very good signal-to-noise ratio
- Frequency Range: 0.27 to 10k Hz
- Ceramic sensing element



MODELS 604B31, M604B31

- Triaxial accelerometer
- Through-bolt aids in cable orientation
- Ceramic sensing element



MODELS 602D01, M602D01

- Easy installation in tight spaces
- Through-bolt aids cable orientation
- Low profile, less than 1 in. height



MODELS HT602D01, HTM602D01

- Ceramic sensing element
- Low profile design
- Through-bolt mount



MODELS 607A01, M607A01

- Patented 360° swivel mount design
- Frequency range: 0.5 to 10k Hz



MODELS 607A11, M607A11

- Ideal for submersible applications
- Patented 360° swivel mount design
- Frequency range: 0.5 to 10k Hz
- Available cable lengths:
 - 10 ft. (Model 607A11)
 - 20 ft. (Model 607A11/020BZ)
 - 30 ft. (Model 607A11/030BZ)
 - 50 ft. (Model 607A11/050BZ)



MODELS 608A11, M608A11

- Ideal for submersible applications
- Small installation footprint
- Frequency range: 0.5 to 10k Hz
- Available cable lengths:
 - 10 ft. (Model 608A11)
 - 20 ft. (Model 608A11/020BZ)
 - 30 ft. (Model 608A11/030BZ)
 - 50 ft. (Model 608A11/050BZ)



PRECISION ICP® ACCELEROMETERS (100 mV/g SENSITIVITY UNLESS OTHERWISE NOTATED)

Industrial accelerometers for route-based condition monitoring and predictive maintenance.



MODELS 622B01, M622B01

- Full frequency sweep calibration
- 15k Hz high frequency response
- Ideal for early detection of bearing defects



MODELS 628F01, M628F01

- Quartz sensing element
- Frequency range: 0.3 to 12k Hz
- Low temperature coefficient



MODELS 625B01, M625B01

- Ceramic sensing element
- Low profile design
- Through-bolt mount



4-20 mA OUTPUT VIBRATION TRANSMITTER

Looking for an overall vibration measurement on your most critical machinery? Our line of 4-20 mA vibration transmitters will interface directly to your PLC, DCS or SCADA control system. Scaled in inches per second velocity or g's acceleration, these sensors provide 24/7 online protection for key plant machines, reducing downtime.

SERIES 640B0X

- Monitors and protects 24/7
- Avoids costly catastrophic failures
- Interfaces with plant monitoring & PI systems

MODEL 640B00

- Output: 0 – 0.5 ips peak
- Frequency range: 3 to 1000 Hz

MODEL 640B00

- Output: 0 – 0.5 ips peak
- Frequency range: 3 to 1000 Hz

MODEL 640B01

- Output: 0 – 1.0 ips peak
- Frequency range: 3 to 1000 Hz

MODEL 640B01

- Output: 0 – 1.0 ips peak
- Frequency range: 3 to 1000 Hz

BEARING FAULT DETECTOR



MODELS 682C03, 682C05

- Output: Two 4-20 mA signals (one scaled for RMS overall vibration, one scaled for true peak vibration) plus raw vibration signal
- Measurement range: ± 50 g

BNC TERMINATION BOXES

BNC termination enclosures offer a simple, economical and safe method for accessing up to 12 sensors that are installed in remote locations.



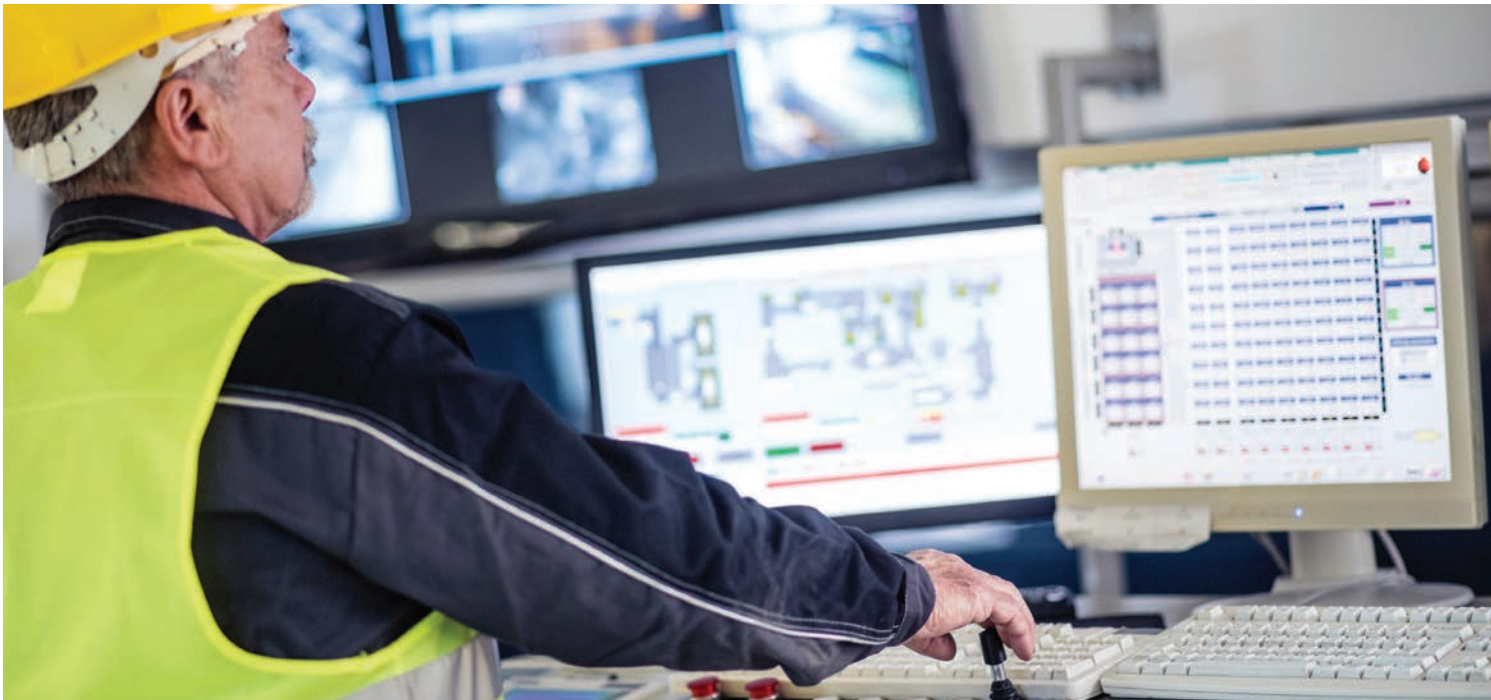
MODEL 691A51/02

- 2 output channels via BNC



MODEL 691A51/04

- 4 output channels via BNC



STOCK CABLES FOR INDUSTRIAL PRODUCTS

Industrial Stock Cables are available for immediate shipment but are not covered under Platinum Stock Sensors Lifetime Warranty.

**Stock cables are available in 10, 20 & 30 foot (3, 6, 9 meter) lengths.



POLYURETHANE CABLE ASSEMBLY

MODEL 058BRBZ

- 2-conductor polyurethane cable, with 2-socket MIL to blunt cut



POLYURETHANE CABLE ASSEMBLY

MODEL 058BQBZ

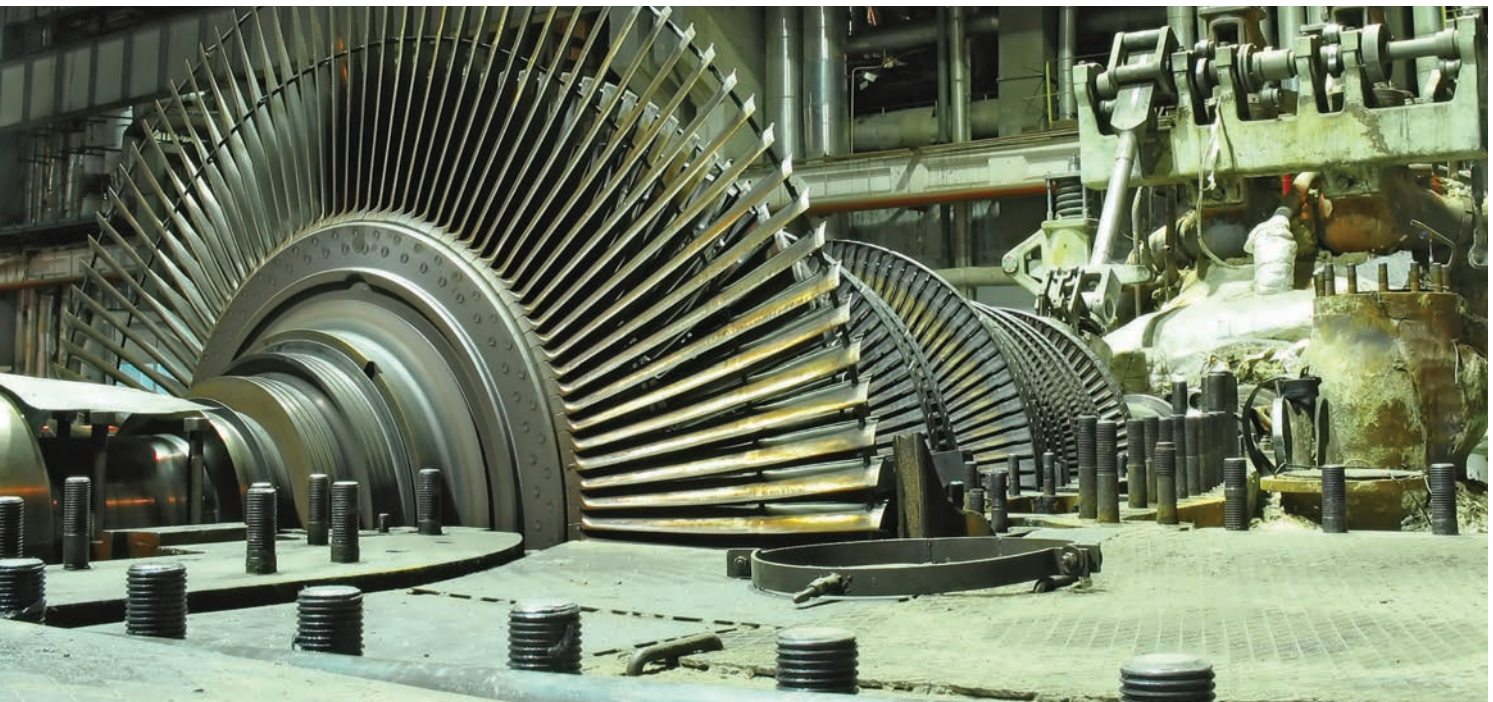
- 2-conductor polyurethane cable, with right-angle 2-socket MIL to blunt cut



POLYURETHANE CABLE ASSEMBLY

MODEL 052AEBZ

- 2-conductor polyurethane cable, with 2-socket MIL environmental boot to blunt cut



PTFE CABLE ASSEMBLY

MODEL 053AEBZ

- 2-conductor PTFE cable, with 2-socket MIL environmental boot to blunt cut



SAFETY BREAKAWAY CABLE ASSEMBLY

MODEL 050LQ006LU

- 6 ft coiled 2-conductor polyurethane cable, with 2-socket MIL to 3-pin half breakaway connector



SAFETY BREAKAWAY CABLE ASSEMBLY

MODEL 052LV001AC

- 1 ft 2-conductor polyurethane cable, with 3-socket half breakaway connector to BNC plug



Dalimar

instruments

193 Rue Joseph-CarrierVaudreuil-Dorion, QC J7V 5V5, CANADA

Toll-Free in the USA: 888 424 0033

Phone: 1 450 424 0030 | Email: info@dalimar.com

PCB Piezotronics, Inc. is a designer and manufacturer of microphones, vibration, pressure, force, torque, load, and strain sensors, as well as the pioneer of ICP® technology used by design engineers and predictive maintenance professionals worldwide for test, measurement, monitoring, and control requirements in automotive, aerospace, industrial, R&D, military, educational, commercial, OEM applications, and more. With a worldwide customer support team, 24-hour SensorLineSM, and a global distribution network, PCB® is committed to Total Customer Satisfaction. Visit www.pcb.com for more information. PCB Piezotronics, Inc. is a wholly owned subsidiary of MTS Systems Corporation. Additional information on MTS can be found at www.mts.com.

© 2019 PCB Piezotronics, Inc. In the interest of constant product improvement, specifications are subject to change without notice. PCB®, ICP®, Swiveler®, Modally Tuned®, and IMI® with associated logo are registered trademarks of PCB Piezotronics, Inc. in the United States. ICP® is a registered trademark of PCB Piezotronics Europe GmbH in Germany and other countries. UHT-12TM is a trademark of PCB Piezotronics, Inc. SensorLineSM is a service mark of PCB Piezotronics, Inc. SWIFT® is a registered trademark of MTS Systems Corporation in the United States. Dalimar Industries ULC is an affiliate of PCB Piezotronics, Inc. and markets products of PCB and The Modal Shop, Inc. in Canada. PCB Piezotronics, Inc. is a wholly-owned subsidiary of MTS Systems Corporation.

DARIMAR-PLATINUM-0819



MTS Sensors, a division of MTS Systems Corporation (NASDAQ: MTSC), vastly expanded its range of products and solutions after MTS acquired PCB Piezotronics, Inc. in July, 2016. PCB Piezotronics, Inc. is a wholly owned subsidiary of MTS Systems Corp.; IMI Sensors and Larson Davis are divisions of PCB Piezotronics, Inc.; Accumetrics, Inc. and The Modal Shop, Inc. are subsidiaries of PCB Piezotronics, Inc.