

Installation Instructions

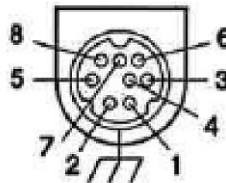
Model LN 8-pin Mini Din Connector



Assembly for Bridge/Differential/RSE/NRSE Sensors

The following illustrates the proper connections for Bridge (Quarter, Half, Full), Differential Voltage, RSE (Referenced Single Ended) and NRSE (Non-Referenced Single Ended) mode sensors.

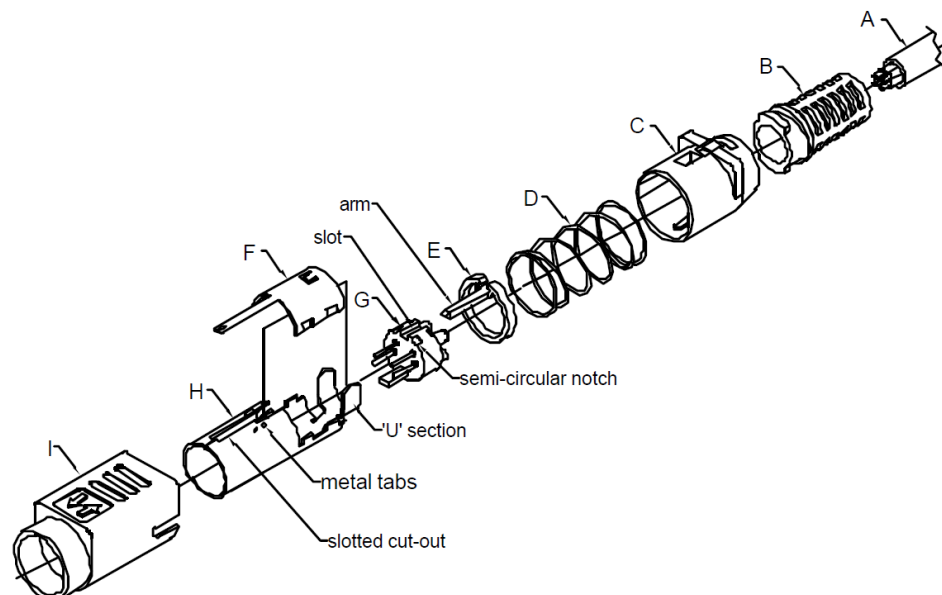
Contact	Bridge/Diff Pinout
1	Neg (-) Signal
2	Pos (+) Signal
3	Shorted to Pin 6 (Sense -)
4	No Connection
5	Pos (+) Excitation
6	Neg (-) Excitation
7	No Connection
8	Shorted to Pin 5 (Sense +)
Shell	Shield



NOTE: If sense lines are not used, they should be tied to the excitation conductors.

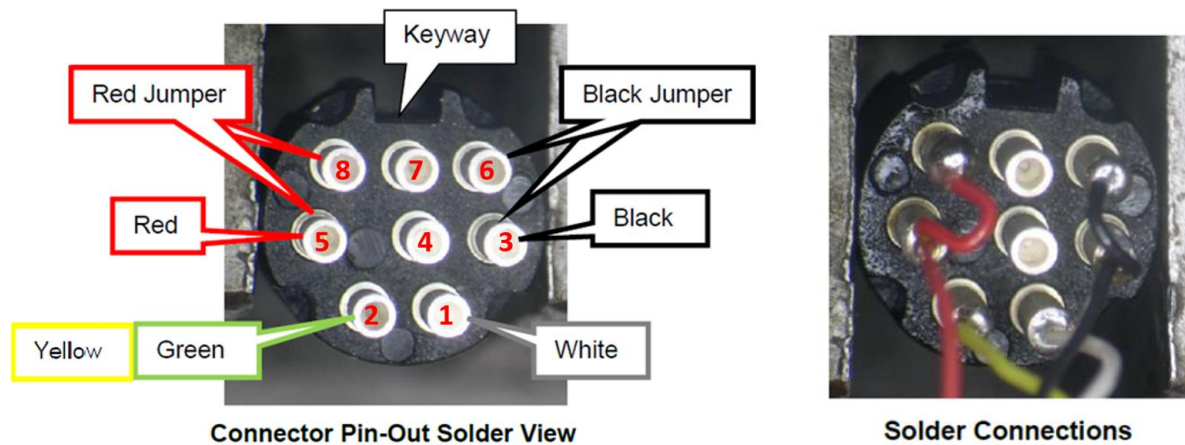
Parts List

- A - Customer Cable
- B - Strain Relief
- C - Rear Housing
- D - Coil Spring
- E - Plastic Guide
- F - Upper Body
- G - Pin Block
- H - Lower Body
- I - Forward Housing



Assembly Procedure Steps

- 1) Attach Strain Relief (B) to Rear Housing (C).
- 2) Insert Cable (A) through Strain Relief (B)/ Rear Housing (C) assembly, Coil Spring (D) and Plastic Guide (E).
- 3) Solder cable conductors to solder cups on Pin Block (G).



- 4) Properly align Pin Block (G) with Lower Body (H). The slotted section on the top of the Pin Block (G) must line up with the slotted cutout on the Lower Body (H) and the 4 semi-circular notches around the perimeter of the Pin Mold (G) must line up with the 4 metal tabs inside the Lower Body (H).
- 5) Push Pin Block (G) forward into the Lower Body (H) until it locks into place.
- 6) Crimp 'U' section of Lower Body (H) onto Cable (A).
- 7) Fit Plastic Guide (E) into Lower Body (H) by placing plastic arm into the appropriate slot on the top of the metal body.
- 8) Attach Upper Body (F) onto Lower Body (H). Be sure to align all tabs and slots to securely install cover.
- 9) Push Coil Spring (D) onto the Upper Body (F)/ Lower Body (H) assembly. This will help to hold the assembly together.
- 10) Push Strain Relief (B)/ Rear Housing (C) assembly onto the Upper Body (F)/ Lower Body (H) assembly. The two assemblies must be properly aligned as shown in the drawing. Be sure to check that the Coil Spring (D) remains in place and does not go underneath either the Rear Housing (C) or the Plastic Guide (E) or twists during assembly. A significant amount of force may be necessary to lock the two assemblies together.
- 11) Check to make sure that the Strain Relief (B)/ Rear Housing (C) assembly is securely locked into place over the Upper Body (F)/ Lower Body (H) assembly. The two assemblies should not be able to be pulled apart.
- 12) Properly align the new assembly with the Forward Housing (I) as shown in the drawing. Push assembly (twisting Rear Housing "C" part) into Forward Housing (I) until it locks properly into place. The entire plug assembly is now complete.